

INTERIOR SYSTEMS: ASSEMBLY INSTRUCTION

CORNICE FRAME

Version 5 (up to date June 2011)

Changes: End cap added



Subjekt to technical changes.

raumplus

GENERAL INFORMATION

GENERAL INFORMATION:

Preparation

- Use the delivery note to check that all the parts have been delivered.
- Check the parts delivered for any possible damage incurred during transport.
- In case of any damage or missing parts please contact the dealer responsible.
- Check the article numbers (the same as the component numbers) of the individual parts (specified in the assembly instruction and on the delivery note).

Installation or assembly?

- To assemble the raumplus product delivered, please complete the steps described in the assembly instruction in the order specified.
- To install the raumplus product delivered, please complete the steps described in the installation instruction in the order specified.

NOTES:

- It is assumed that you have calculated all the necessary measurements exactly in advance using the measurements manual for raumplus products..
- Handles are not included in the scope of supply.

1_ Frame profile Cornice (82.01.020)

2_ Guiding track (82.12.005)_ black, 320mm

3_ Frame connector (82.10.005)

4_ Cover adjustable foot Cornice (82.10.009)

5_ Tapping screw Cornice 4,2x25mm (82.10.022)

6_ Tapping screw Cornice 4,2 x 32mm (82.10.021)

7_ Adjustable foot Cornice (82.10.026) / Installation plate Cornice (82.10.027)

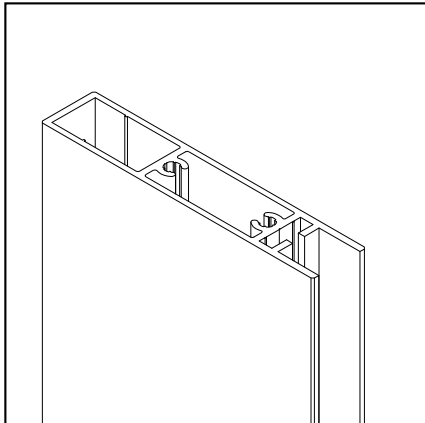
8_ End cap for frame profile (82.10.010)

9_ Housing white Cornice (82.10.041) / Connection pin Cornice (82.10.042)

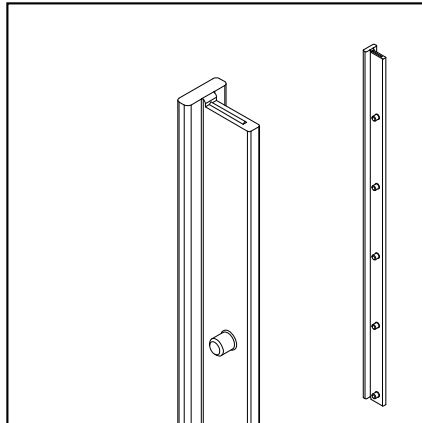
10_ Tapping screw Cornice 4,2 x 13mm (82.10.028) without Fig.

ACCESSORIES

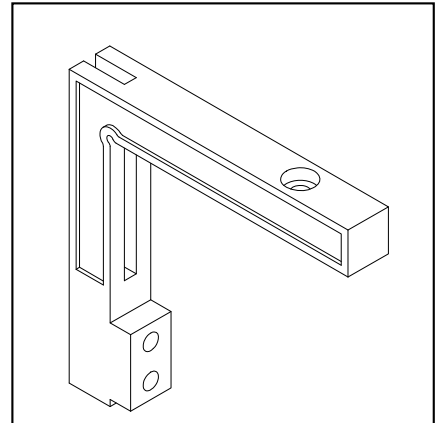
ACCESSORIES:



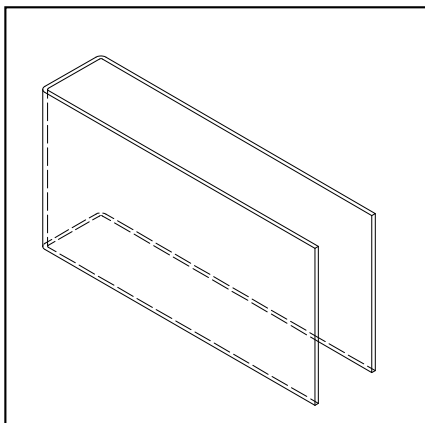
1_



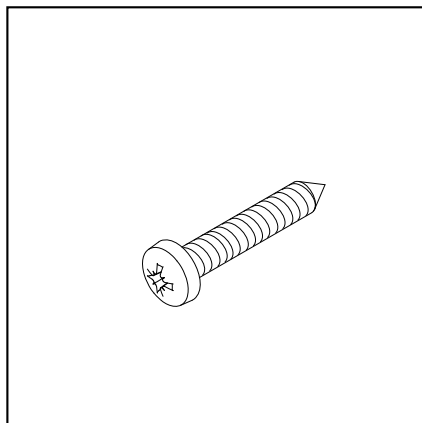
2_



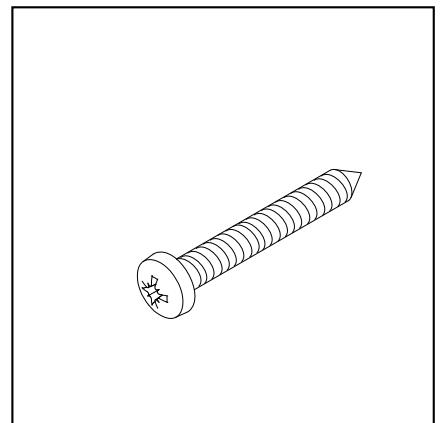
3_



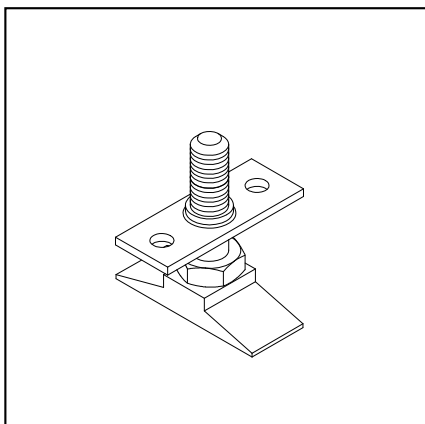
4_



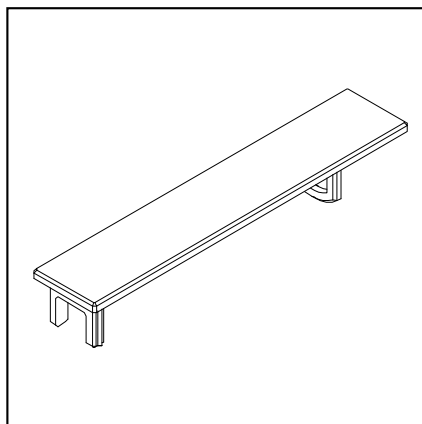
5_



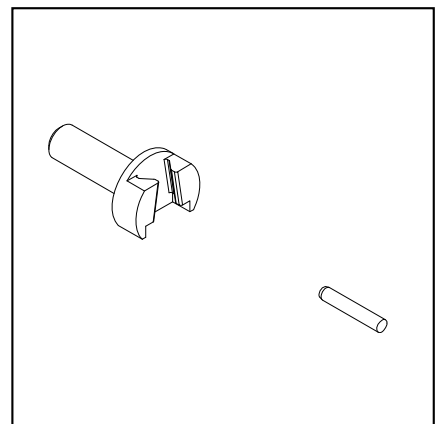
6_



7_



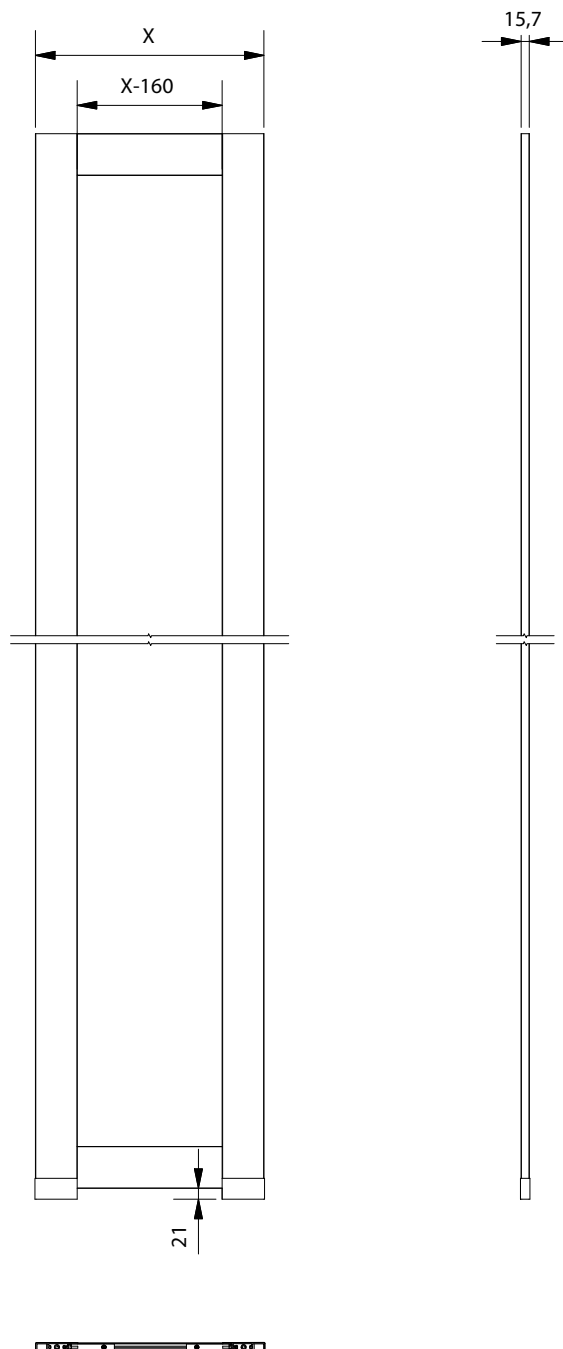
8_



9_

DETAIL DRAWING

CUTTING MEASURE



04_05

INSTALLATION INSTRUCTION

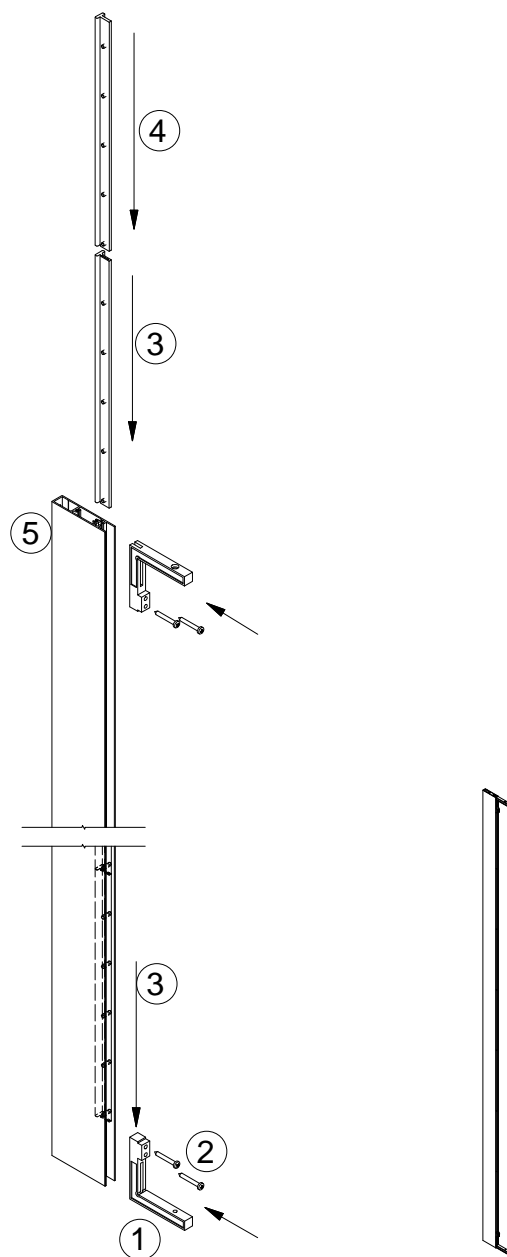
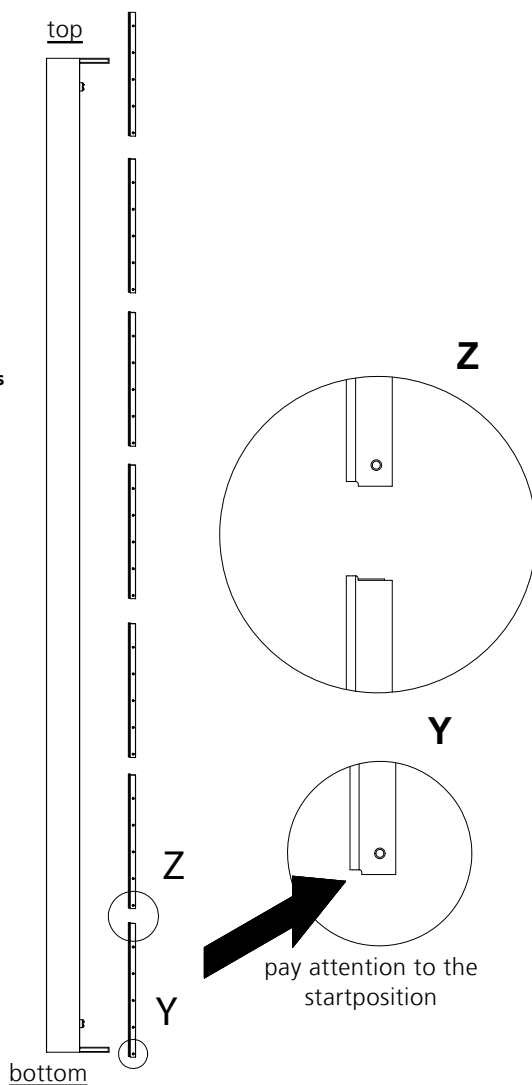
CALCULATION GUIDING TRACK

How much guiding tracks do you need

frame height = X mm			
$X \text{ mm} - 160 \text{ mm} : 320 \text{ mm}$	round guiding track up to complement = Z Stück	Z parts x 2	= parts of guiding tracks per <u>framework</u> (3+4)
		$X \text{ mm} - ((Z-1) \text{ part} \times 320 \text{ mm} + 162 \text{ mm})$	= length of the last guiding track in the vertical profile (4)



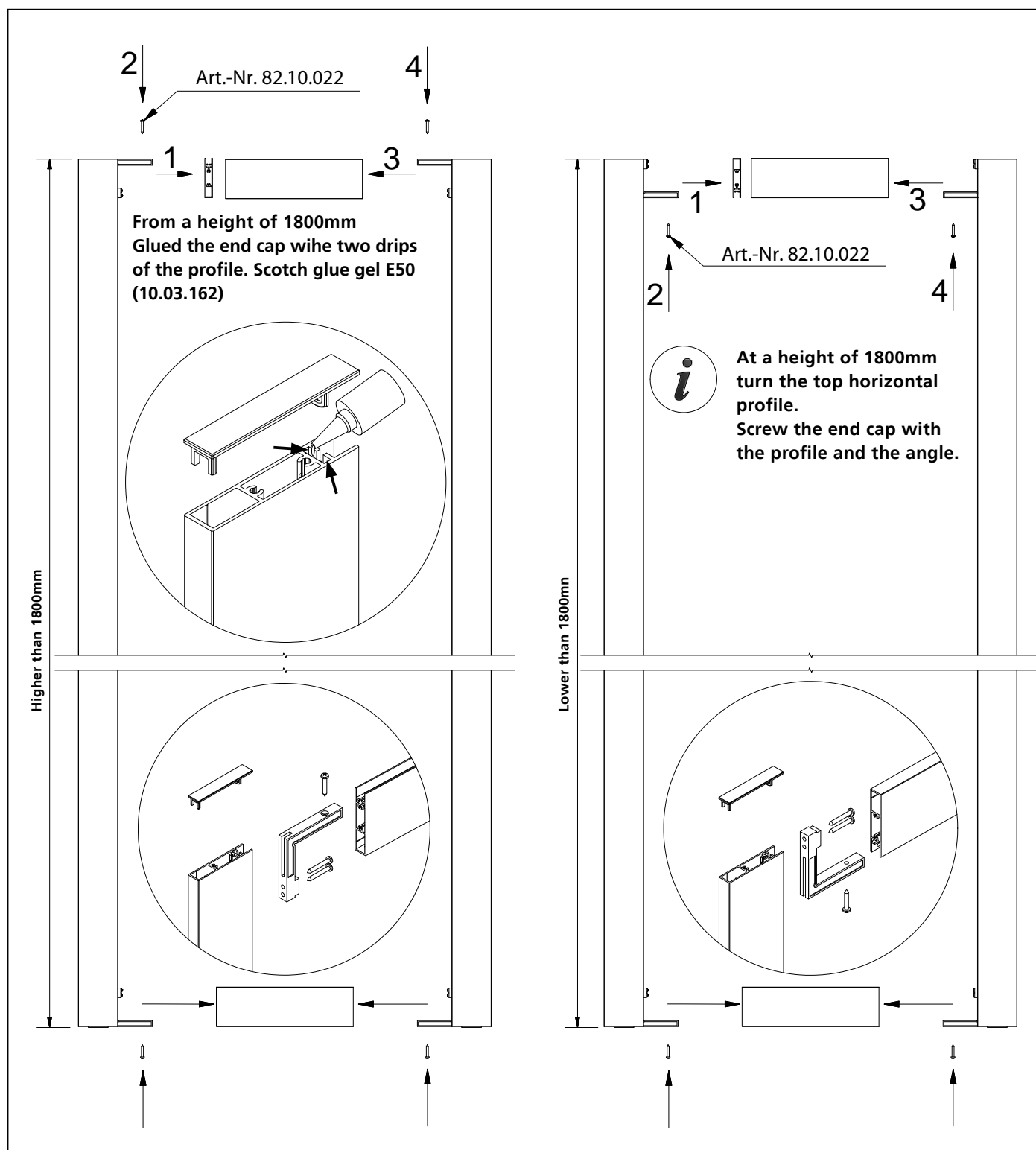
pay attention to the
startposition of the
guiding track!
the outcome of this is
the well defined
top and bottom
of the frame.



PART LIST			
OBJECT	QUANTITY	ITEM NUMBER	DESCRIPTION
1	2	82.10.005	frame connector
2	4	82.10.21	tapping screw 4,2x32
3	6	82.12.005	guiding track 320mm
4	1	82.12.005	guiding track 320mm gekürzt
5	1	82.01.020	frame profile

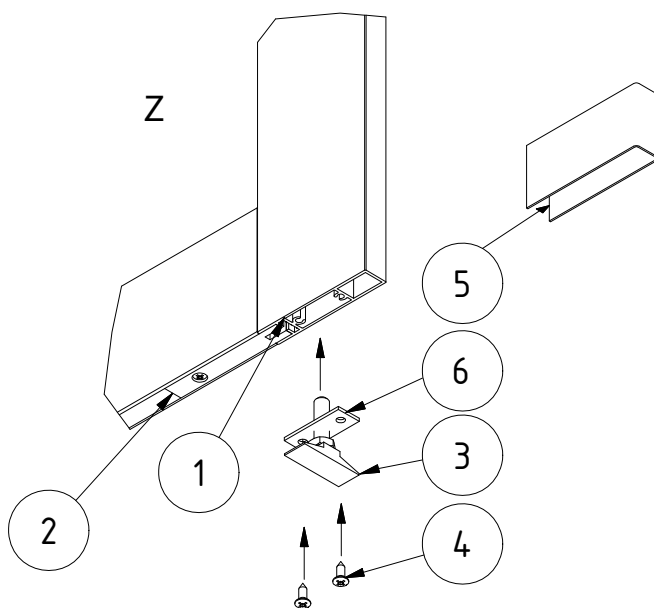
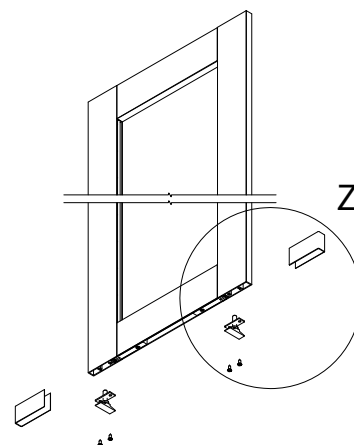
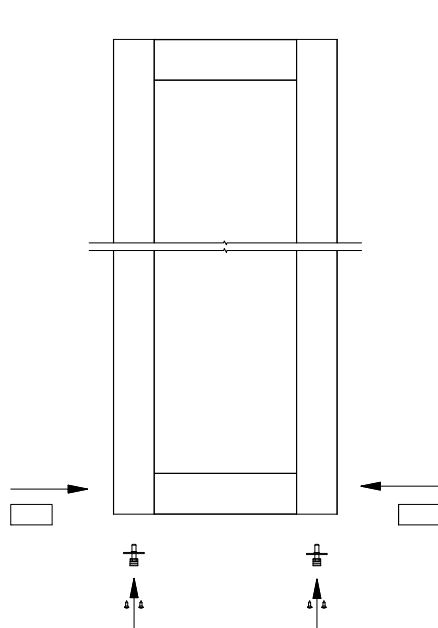
INSTALLATION INSTRUCTION

ASSEMBLY OF THE FRAME ELEMENTS



INSTALLATION INSTRUCTION

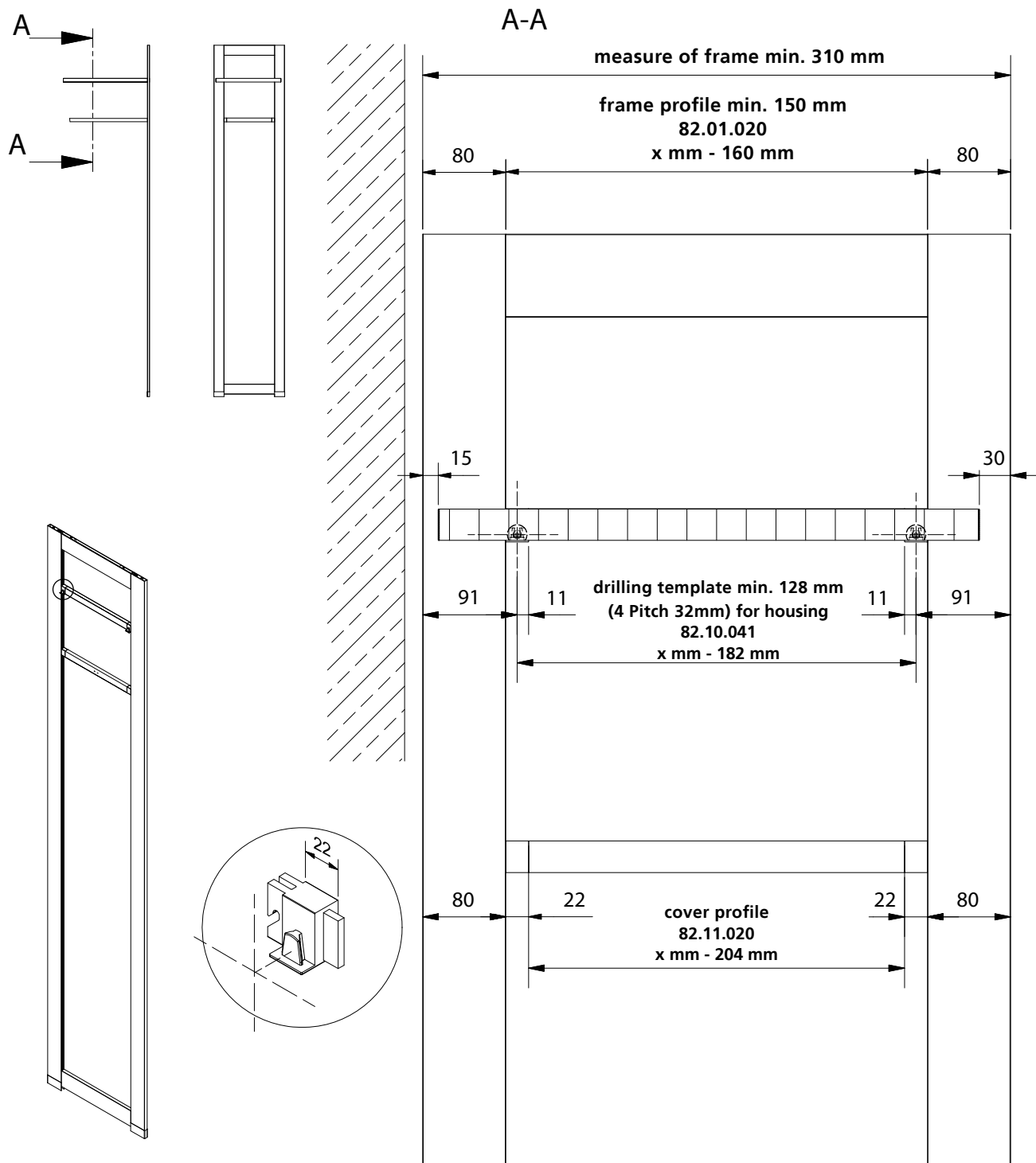
ASSEMBLY ADJUSTABLE FOOT



PART LIST			
OBJECT	QUANTITY	ITEM NUMBER	DESCRIPTION
1	1	82.01.020	frame profile
2	4	82.10.005	frame connector
3	2	82.10.026	adjustable foot
4	4	82.10.028	tapping screw
5	2	82.10.009	cover adjustable foot
6	2	82.10.027	installation plate

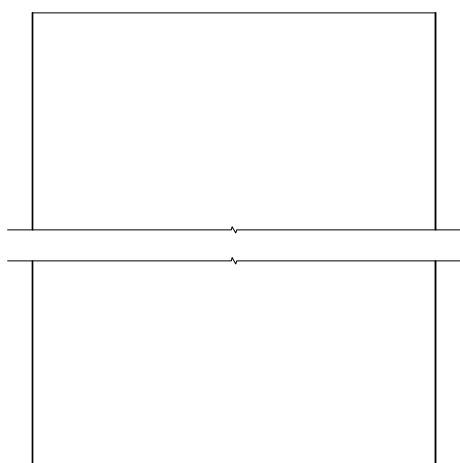
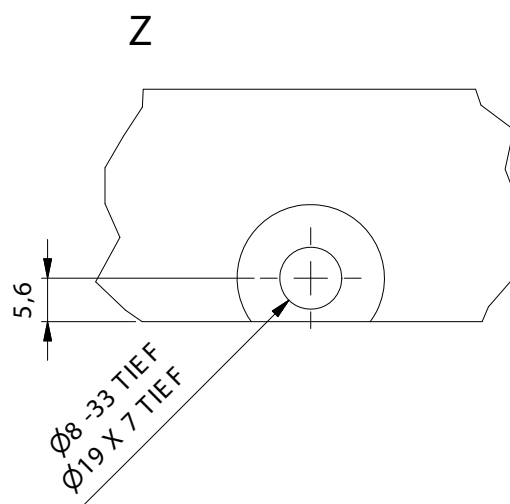
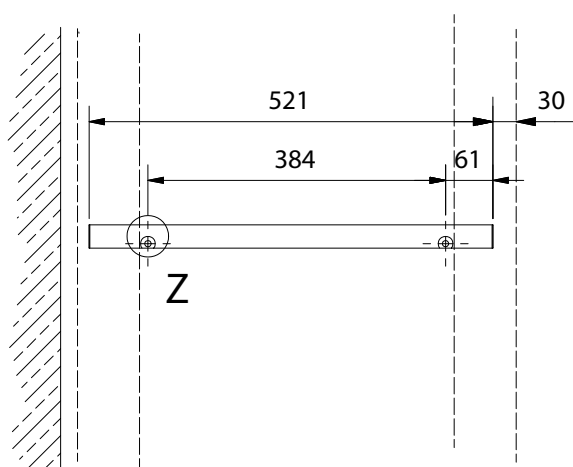
DETAIL DRAWING

CUTTING MEASURE



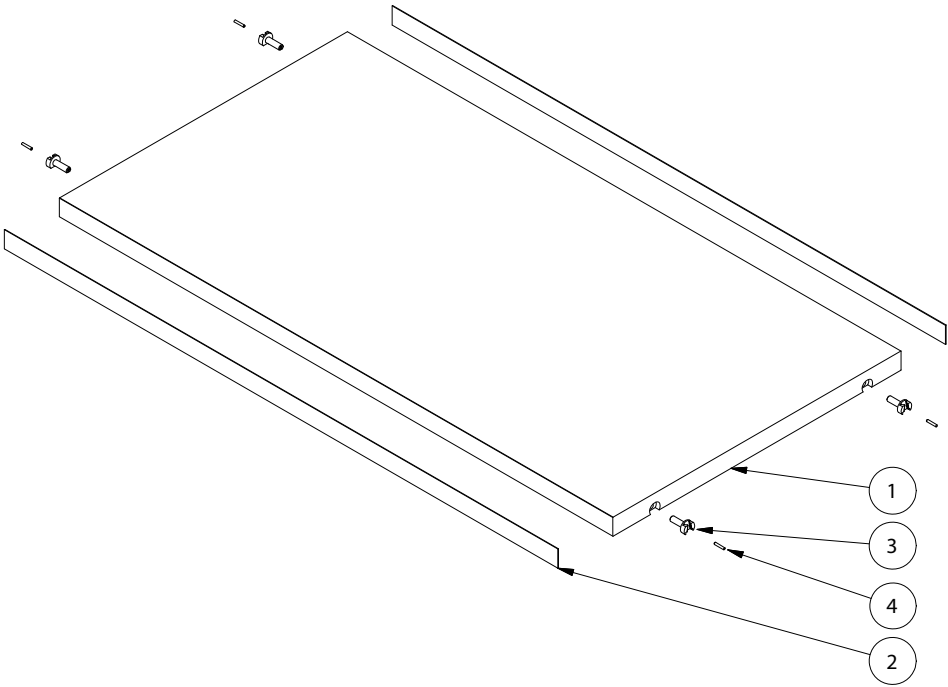
DETAIL DRAWING

SHELF



DETAIL DRAWING

SHELF

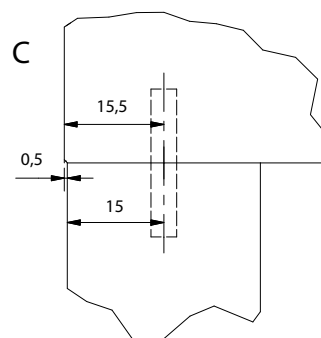
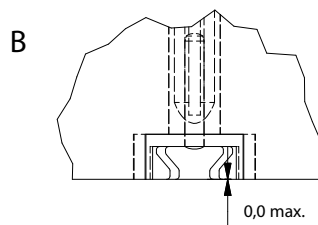
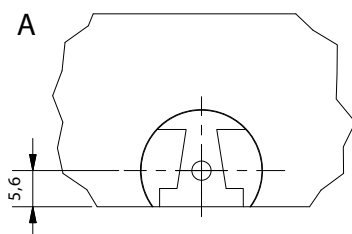
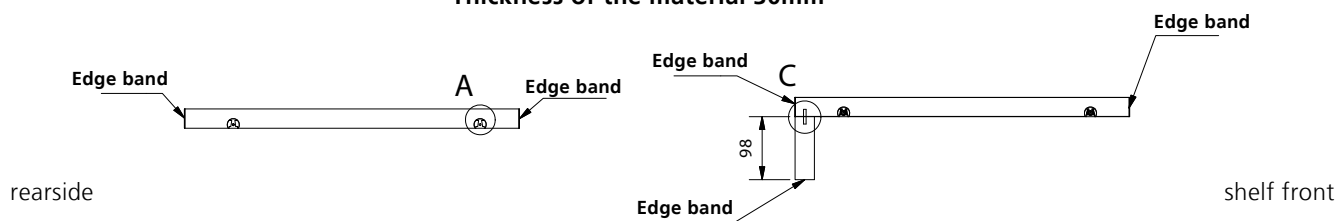


PART LIST			
OBJECT	QUANTITY	ITEM NUMBER	DESCRIPTION
1	1		shelf
2	2		1 mm edge band
4	4	82.10.042	connection pin
3	4	82.10.041	housing white

DETAIL DRAWING

SHELF

Thickness of the material 30mm



Arrangement of the panels

