

SWING DOOR SLIM LINE:

PLANNING DOCUMENT

Version 1 (up to date February 2012)

2.99.4 x

Planning  easy medium difficult

Subject to technical changes.

raumplus

CONTENTS

General_ Page 02

Technical terms_ Pages 03 - 05

Planning dimensions_ Pages 06 - 07

Detail drawing_ Pages 08 – 09

Dimension sheet_ Page 10

List of requirements_ Page 11

GENERAL:

- The Swing door by raumplus offers you great variation options and versatility.
- With the Swing doors, it's possible to install tempered safety glass, laminated safety glass and wood as a door leaf.
- For the assembly of the aluminum room doors, please read the corresponding section.
- These instructions are created by people for people.
We have taken great care to formulate the situations as simply and clearly as possible and to illustrate them.
- If you still think that something is confusing here or there, please let us know so that we can revise the relevant passages.



**Note: all detail drawings refer to one door;
the door stopping side is DIN right
(left as a mirror image to right)!!!**

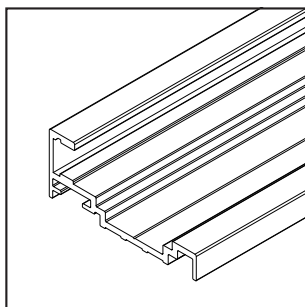


VERSION INDEX:

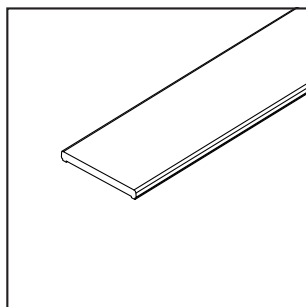
Version 1 : Item number door jamb swing door slim line corrected (14.98.020)

TECHNICAL TERMS

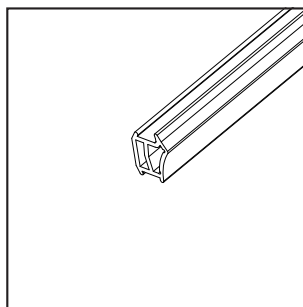
ACCESSORIES



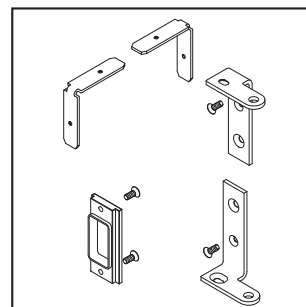
1_ 14.98.0xx



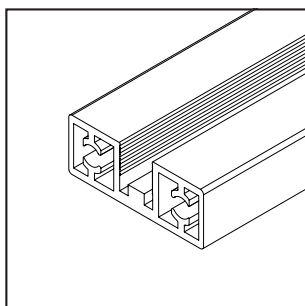
2_ 13.33.0xx



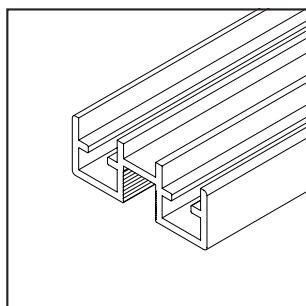
3_ 10.14.017



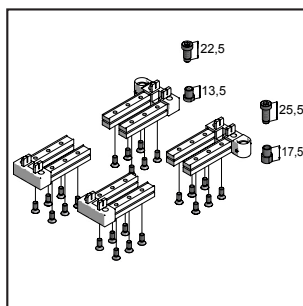
4_ 10.14.030



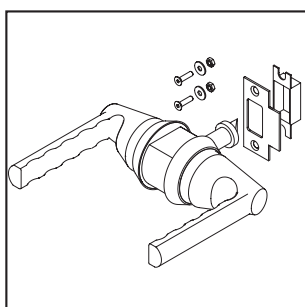
5_ 14.91.020



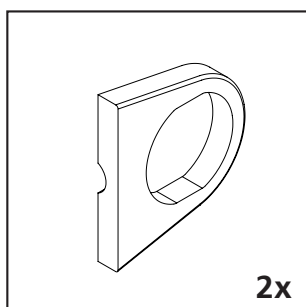
6_ 14.92.020



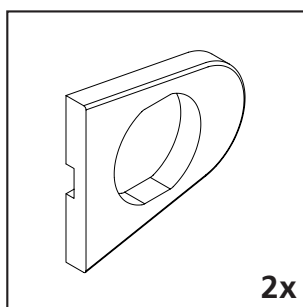
7_ 10.14.010



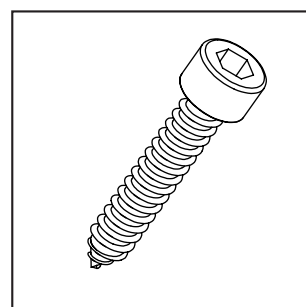
8_ 10.14.011



9_ 10.14.014



10_ 10.14.024



11_ 10.07.012

1_ Frame profile Swing door slim line

2_ Dividing rail 28mm

3_ Gasket for door stop

4_ Fitting set Swing door slim line

5_ Vertical profile of interior door

6_ Cross profile of interior door

7_ Hardware set Swing door

8_ Handle set Swing door

w/o fig.: Handle lockable version (10.14.018)

w/o fig.: Handle bathroom version (10.14.019)

9_ Adapter plate for handle /-for tempered safety glass

10_ Adapter plate for handle /-for laminated safety glass

11_ Frame connection screw 32 mm

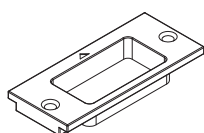
12_ w/o fig.:double side tape for dividing rail

FOR OTHER COLORS PLEASE ASK YOUR SUPPLIER

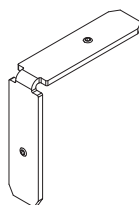
TECHNICAL TERMS

PROFILE / FITTINGS OVERVIEW SWING DOOR

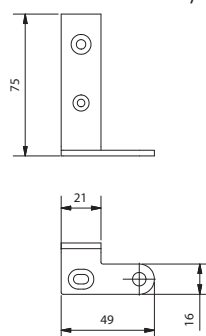
Striking plate insert



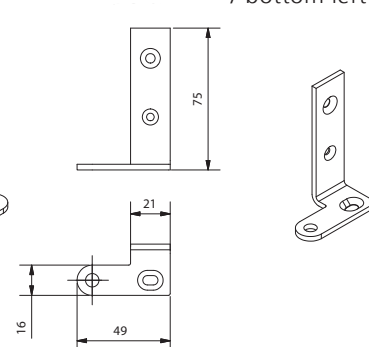
connector



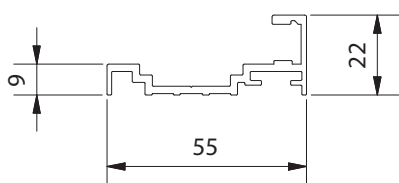
Pivot hinge bottom right
/ top Left



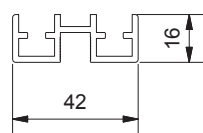
Pivot hinge upper right
/ bottom left



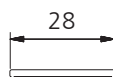
Door jamb Swing door
slim line 14.98.0xx



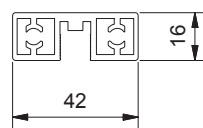
Cross profile of
interior door 14.92.020



Dividing rail surface 13.33.0xx



Vertical profile of interior door 14.91.020



Gasket for door stop 10.14.017



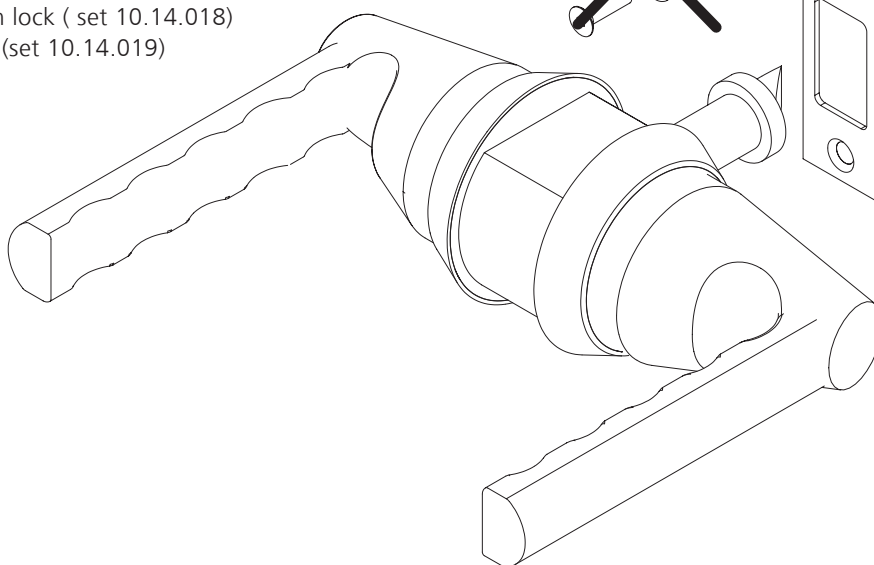
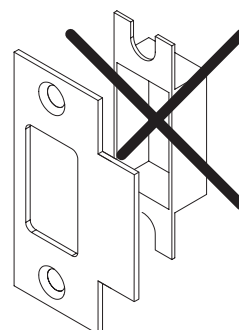
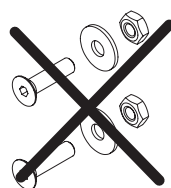
TECHNICAL TERMS

HANDLE VARIATIONS FOR SWING DOOR

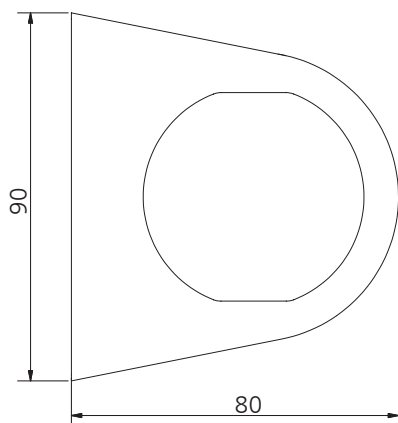


Replace the screws and strike plate housing, against the components from the fitting set 10.14.030

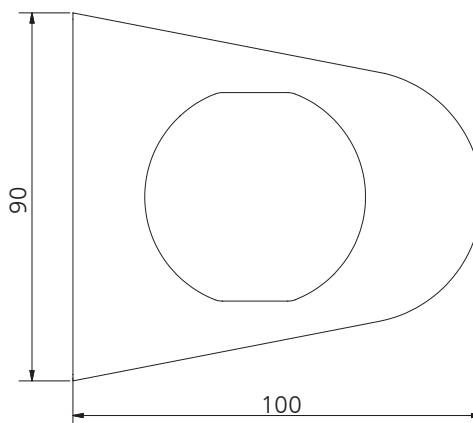
Handle without lock (set 10.14.011)
Handle with lock (set 10.14.018)
WC handle (set 10.14.019)



Adapterplate for handle
for tempered safety glass
10.14.014



Adapterplate for handle
for laminated safety glass
10.14.024



PLANNING DIMENSIONS

SWING DOOR SLIM LINE

GENERAL:

max. height (ZH) 2500mm

max. width (ZB) 1000mm

max. doorleaf weight 35 kg

Panel thickness from 6 to 10mm

Cutting dimensions:

Legend

1. Frame

$ZB = LB - 4mm$

$ZH = LH - 2mm$

$SP1 = 1017mm$

$SP2 = ZH - 1092mm$

$SP3 = ZB - 12mm$

$SP4 = ZH - 16mm$

$ZB = (\text{Frame width})$

$LB = (\text{clearance width})$

$ZH = (\text{Frame height})$

$LH = (\text{clearance height})$

2. Doorleaf

$TB = ZB - 25mm$

Rail Swing door = $TB - 32mm$

$TH = ZH - 21mm$

Stile Swing door = $TH - 32mm$

$TB = (\text{Doorleaf width})$

$TH = (\text{Doorleaf height})$

3. Panel

$FB = TB - 16mm$

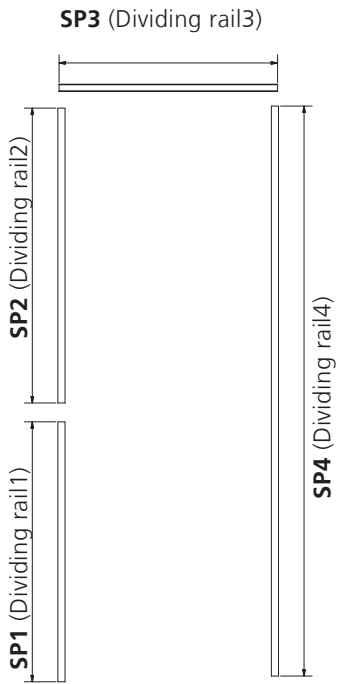
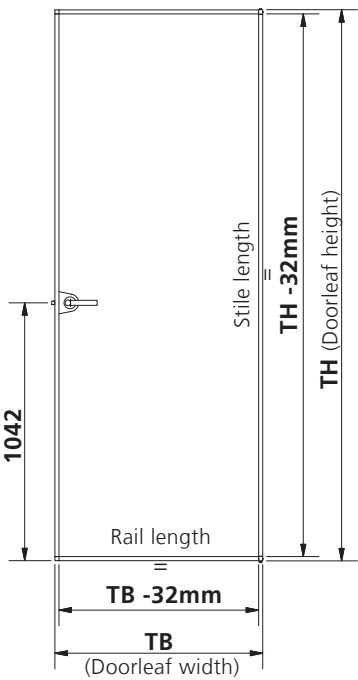
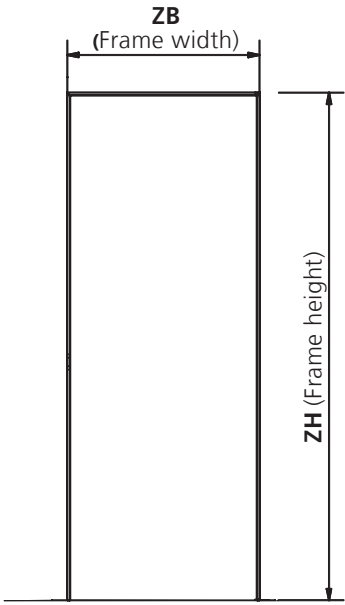
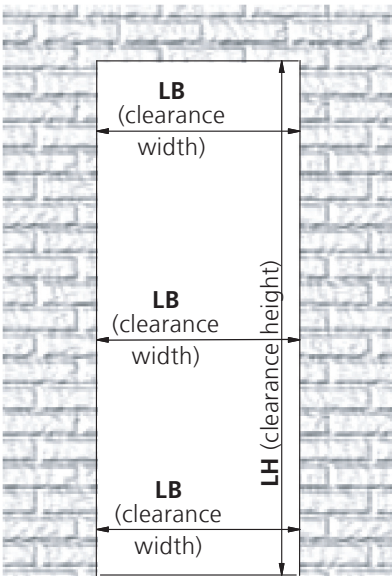
$FH = TH - 16mm$

$FB = \text{Panel width}$

$FH = \text{Panel height}$

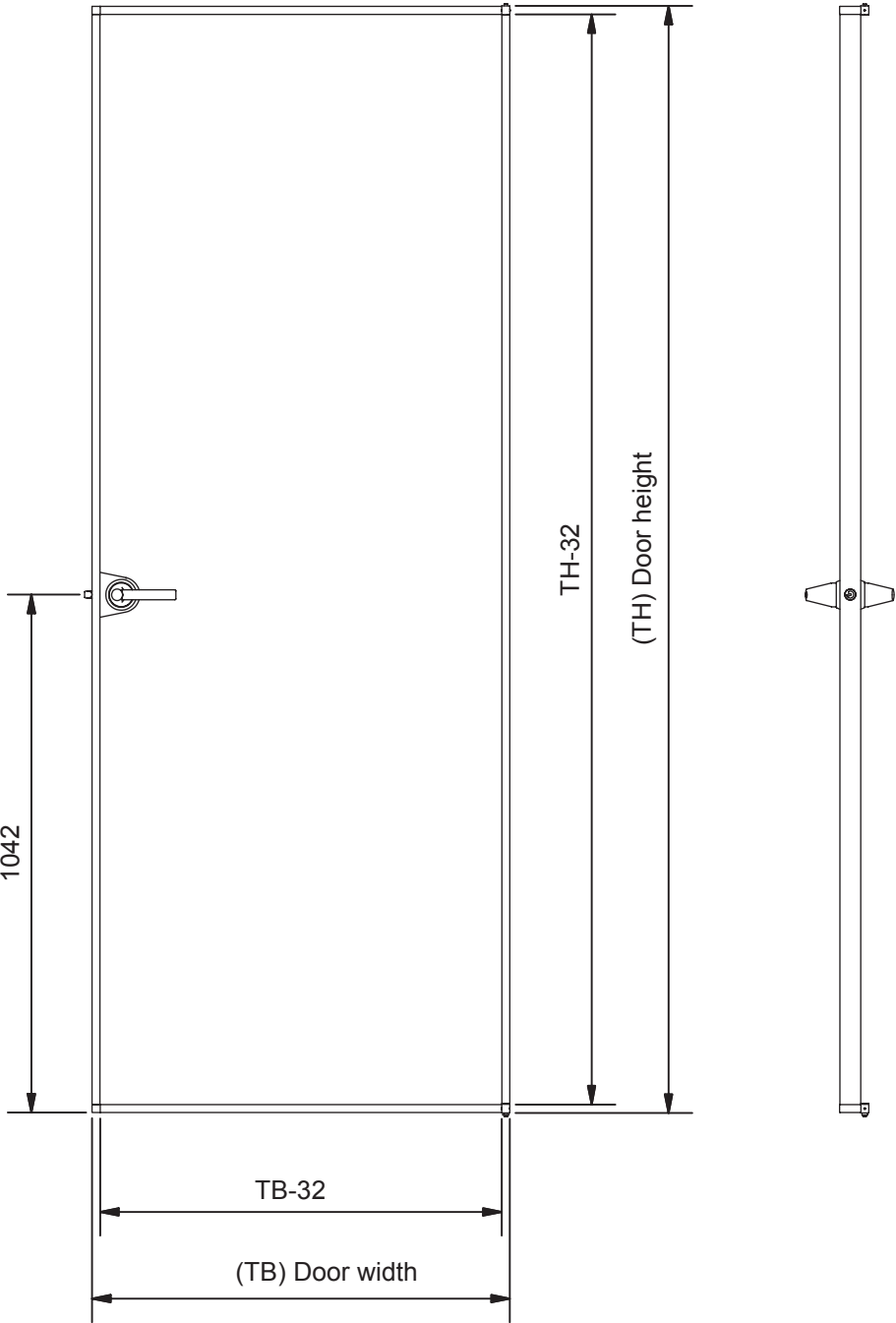
DETAIL DRAWING

DOORFRAME



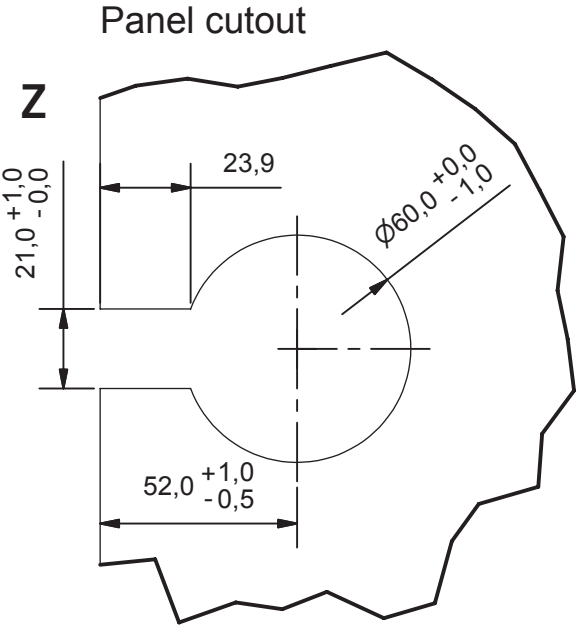
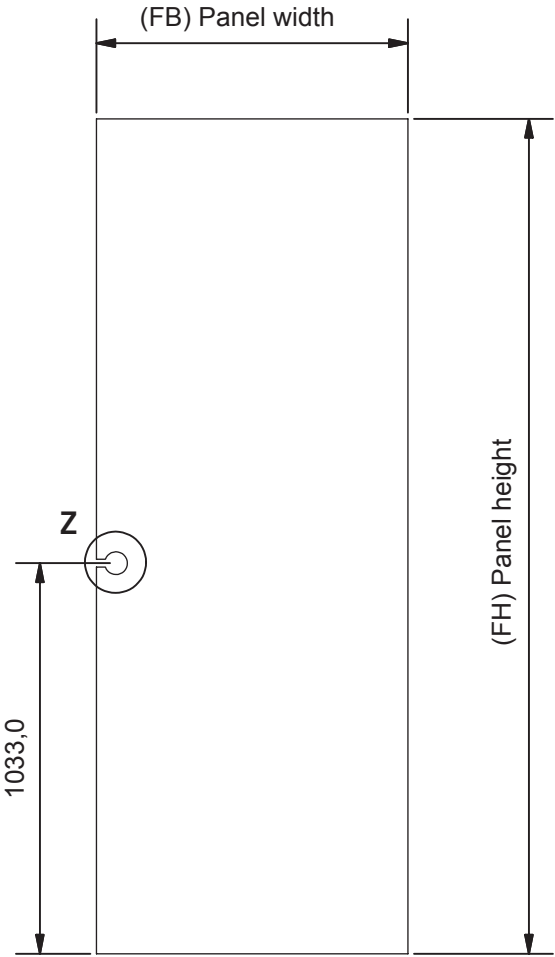
DETAIL DRAWING

DOOR LEAF



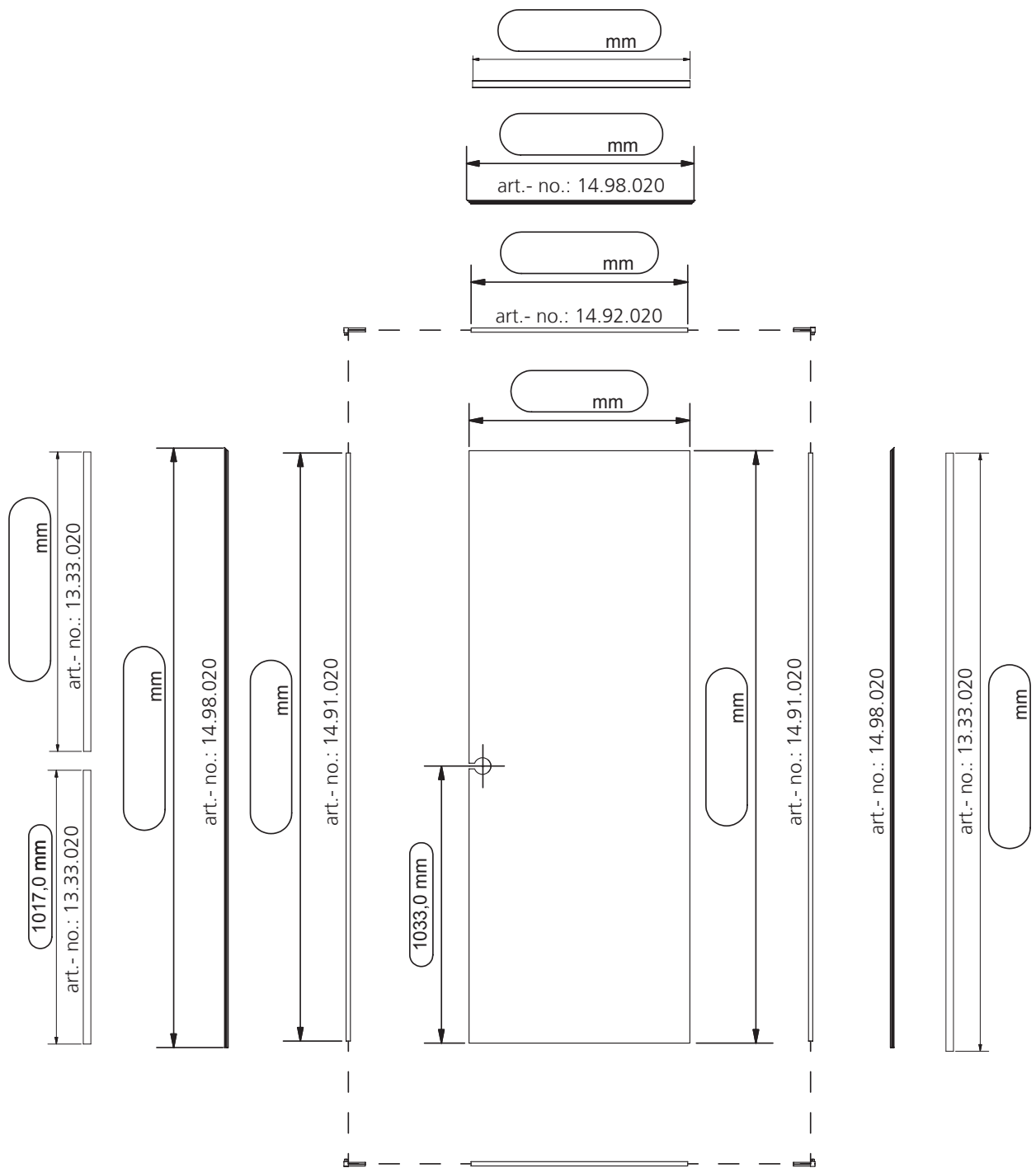
DETAIL DRAWING

PANEL



DIMENSION SHEET

SWING DOOR



REMARKS:

LIST OF REQUIREMENTS

MATERIALS OVERVIEW SWING DOOR SLIM LINE

Pos	Article - no.	Description	Quantity	Unit	Length	Requirement	Remarks
1	14.98.020	Door jamb Swing door	1	piece	5,6m		
2	13.33.020	Dividing rail surface	1	piece	5,6m		
3	14.91.020	Stile swing door	1	piece	5,6m		
4	14.92.020	Cross profile of interior door	1	piece	5,6m		
5	10.14.010	Hardware set swing door	1	piece			
6	10.14.030	Fitting set Swing door slim line	1	piece			
7	10.14.017	Gasket for door stop	1	pack	100m		
8	10.07.012	Frame connection screw 32 mm	8	piece			
9	10.14.011	Handle set Swing door	1	set			Depends on application
alternative							
9a	10.14.018	Handle lockable version	1	set			Depends on application
alternative							
9b	10.14.019	Handle bathroom version	1	set			Depends on application
10	10.14.014	Adapter plate for handle /-for tempered safety glass	1	set			Depends on the type of glas
alternative							
10	10.14.024	Adapter plate for handle /-for laminated safety glass	1	set			Depends on the type of glas
11	10.03.161	Thread adhesive Loctite 480	1	pack of			To secure the screws
12	25.12.045	double side tape for dividing	1	pack of	25m		

All lengths and quantities depending on dimensions of the door
 Assembly and installation only by trained personnel.

