

# INTERIOR SYSTEMS: INSTALLATION INSTRUCTION

## CLOTHES RAIL CORNICE

5.13.2.c



Subject to technical changes.




**raumplus**




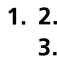
# PRODUCT INFORMATION

## GENERAL INFORMATION: Preparation

- This manual is part of the product and describes the safe and proper installation of the system. Read the instruction carefully and closely before installation
- Please note that the assembly must only be performed by qualified and trained staff in **strict** compliance with all details indicated in this document.  
Improper installation in variation from manufacturer's specification may cause defects and danger, thus endangering the safe fixing of the product as well as the safety of the prospective user. The liability of the manufacturer shall be excluded in case of defects and consequential damages resulting from incorrect assembly of this product.
- Please check the completeness of the delivered parts and check carefully if any transport damages are visible..
- If any parts are damaged or lost, please immediately contact the responsible supplier.
- It is assumed that you have exactly identified all cutting dimensions according to the measurement instruction for **raumplus**-products

## SYMBOLS:

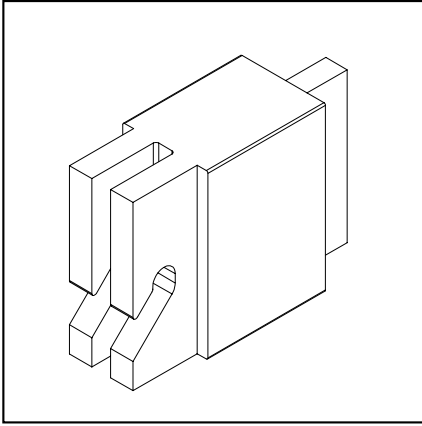
Symbol	Importance
	Risk or danger!
	Advice and information
	Additional information / other documents

	Directional data / direction of movement
	„yes“ and „right“
	„no“ and „wrong“
	Follow the order

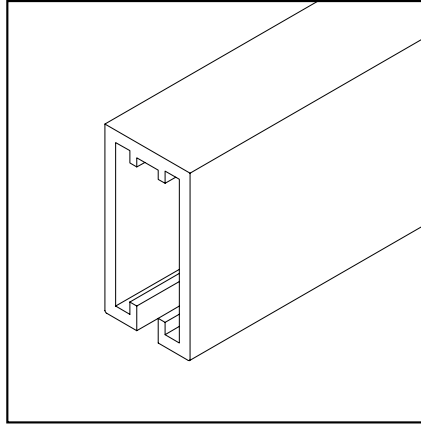


Version 7.1 Modification: cutting dimension at the adjustable depth pages 12-13  
Version 7.2 Illustration adapted Pages 10-11 (length Cover profile)

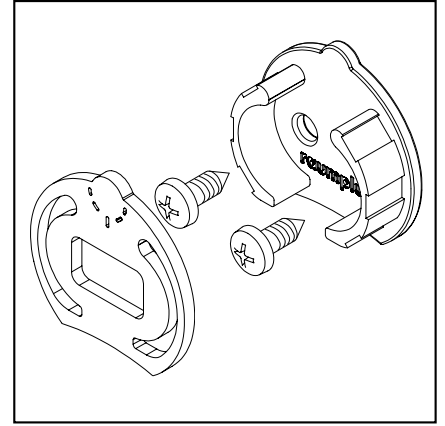
# ACCESSORIES



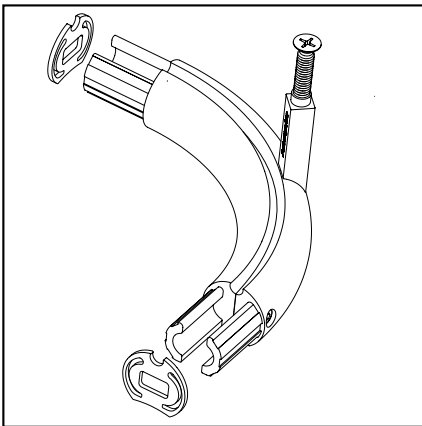
1\_ 82.10.004



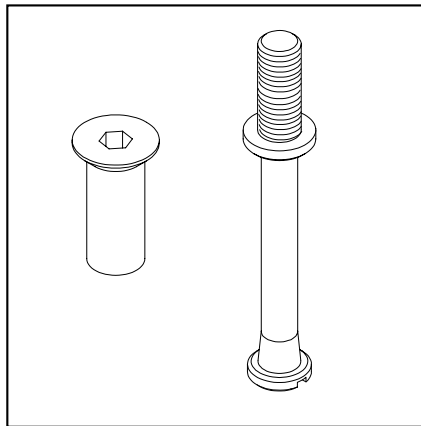
2\_ 82.11.020



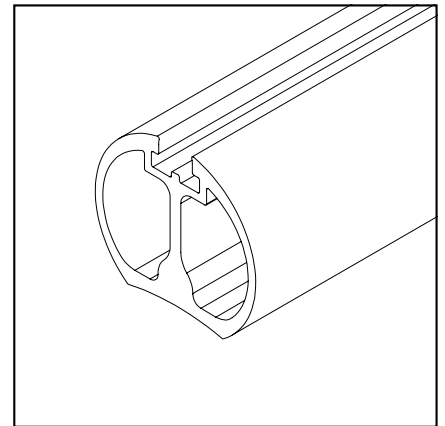
3\_ 82.10.012



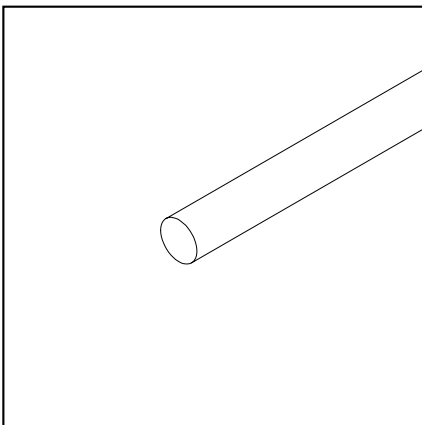
4\_ 80.22.056



5\_ 82.10.034



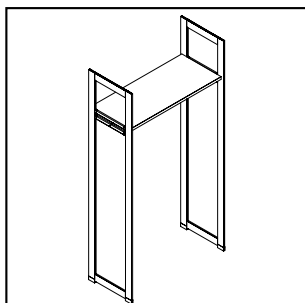
6\_ 80.23.020



7\_ 80.23.025

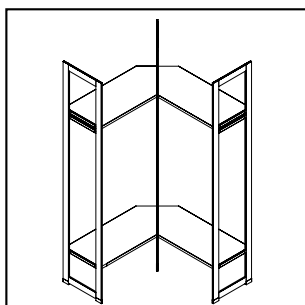
- 1\_ Hanging rod connection
- 2\_ Cover profile Cornice
- 3\_ Frame connector for clothes rail
- 4\_ Hanging rod corner connector
- 5\_ Hanging rod middle carrier
- 6\_ Hanging rod
- 7\_ Rod (PVC)

# INDEX



**Assembly Cornice 566/438 drill picture\_ page 05**

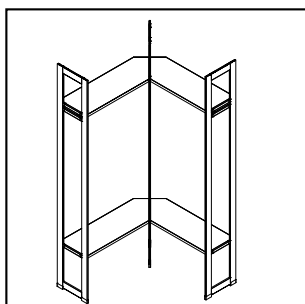
**Hanging rod with middle carrier\_ page 06**



**Cornice hanging rod corner connector\_ page 07**

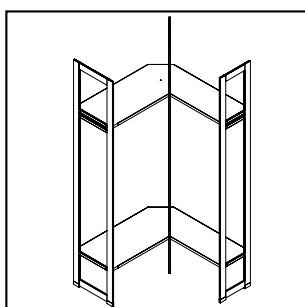
**Cornice rod carrier 566 drill picture\_ page 08**

**Cornice 566 Hanging rod corner connector\_ page 09**



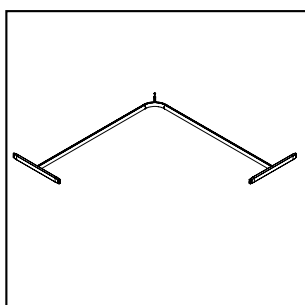
**Cornice rod carrier 438 drill picture\_ page 10**

**Cornice 438 Hanging rod corner connector \_ page 11**



**Cornice 438/566 adjustable depth drill picture\_ page 12**

**Cornice 438/566 Hanging rod corner connector\_ page 13**

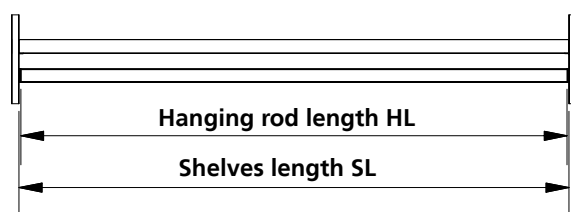


**Pre-assembly of the hanging rod\_ page 14**

**Hanging rod corner connector\_ page 16**

# DETAIL DRAWING

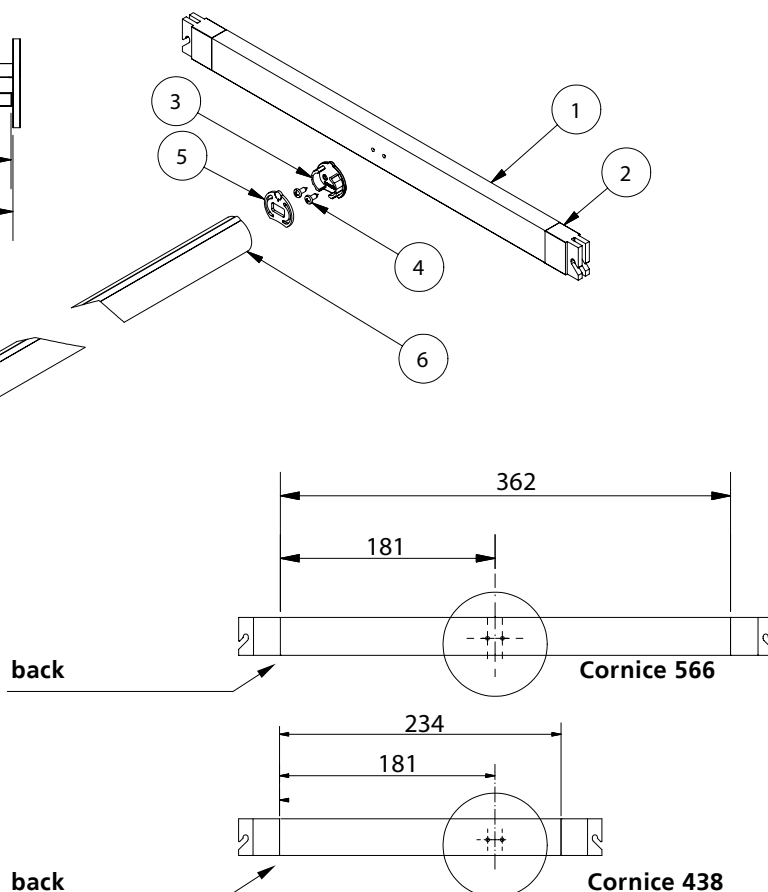
## ASSEMBLY CORNICE 566/438 DRILL PICTURE



$$HL = SL - 8 \text{ mm}$$

$$RL = HL$$

SL = Shelves length  
HL = Hanging rod length  
RL = Rod (PVC) length

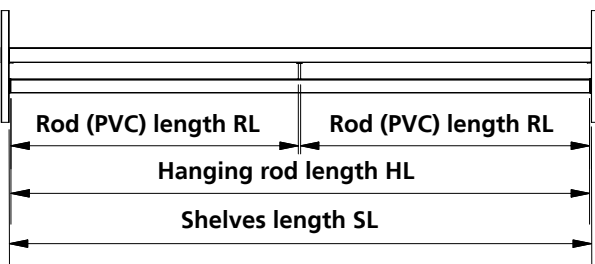
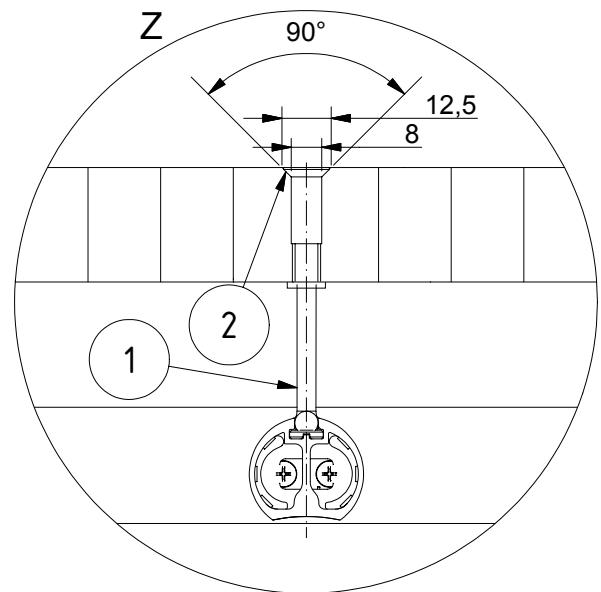
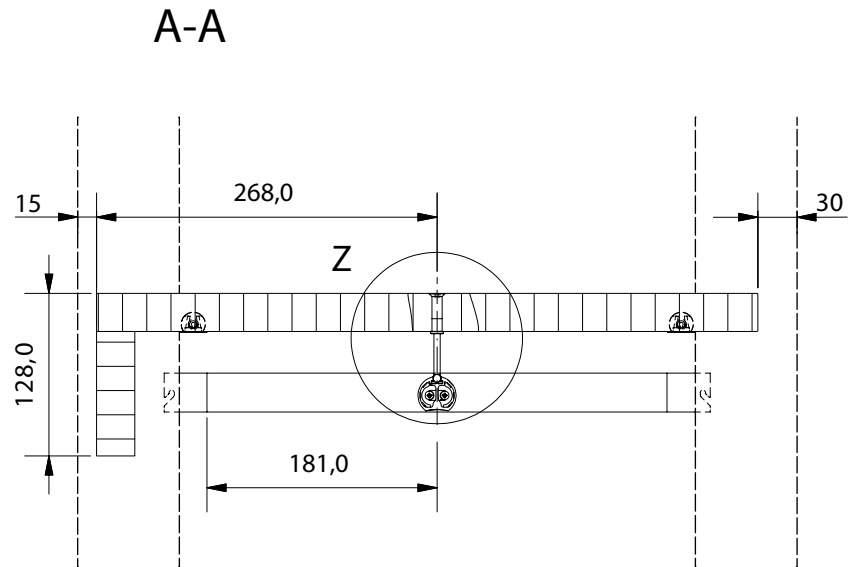
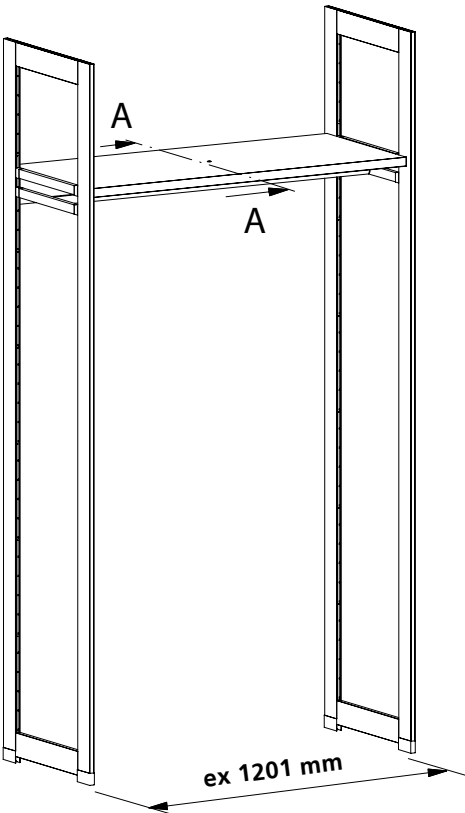


Item list			
Object	Quantity	description	Item number
1	2	Cover profile	82.11.020
2	4	Hanging rod connection	82.10.004
3	2	Socket for hanging rod	82.10.012
4	4	Tapping screw ISO 7049 3,5 x9,5	
5	2	Rubber pad	80.22.056A
6	1	Hanging rod	80.23.020

1\_ List of components for a hanging rod single

# DETAIL DRAWING

## HANGING ROD WITH MIDDLE CARRIER



$$HL = SL - 8 \text{ mm}$$
$$RL = (HL - 10 \text{ mm}) / 2$$

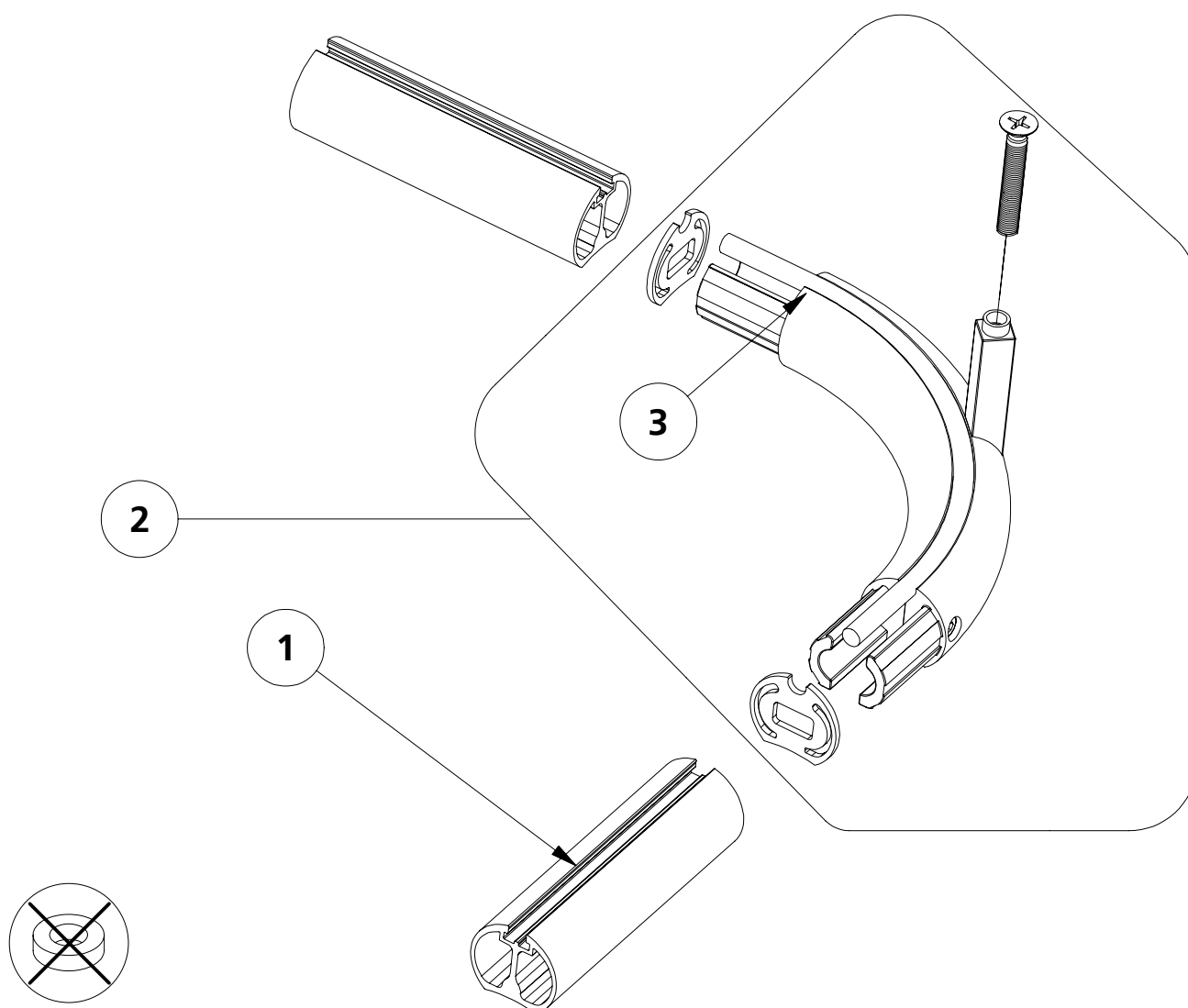
**i** For the hanging rod middle carrier you need a length of at least 1201 mm.

Item list			
Object	Quantity	Description	Item number
1	1	Hanging rod middle carrier including:	82.10.034
2	1	Countersunk cap nut	82.10.035C

SL = Shelves length  
HL = Hanging rod length  
RL = rod (PVC) length

# DETAIL DRAWING

## CORNICE HANGING ROD CORNER CONNECTOR

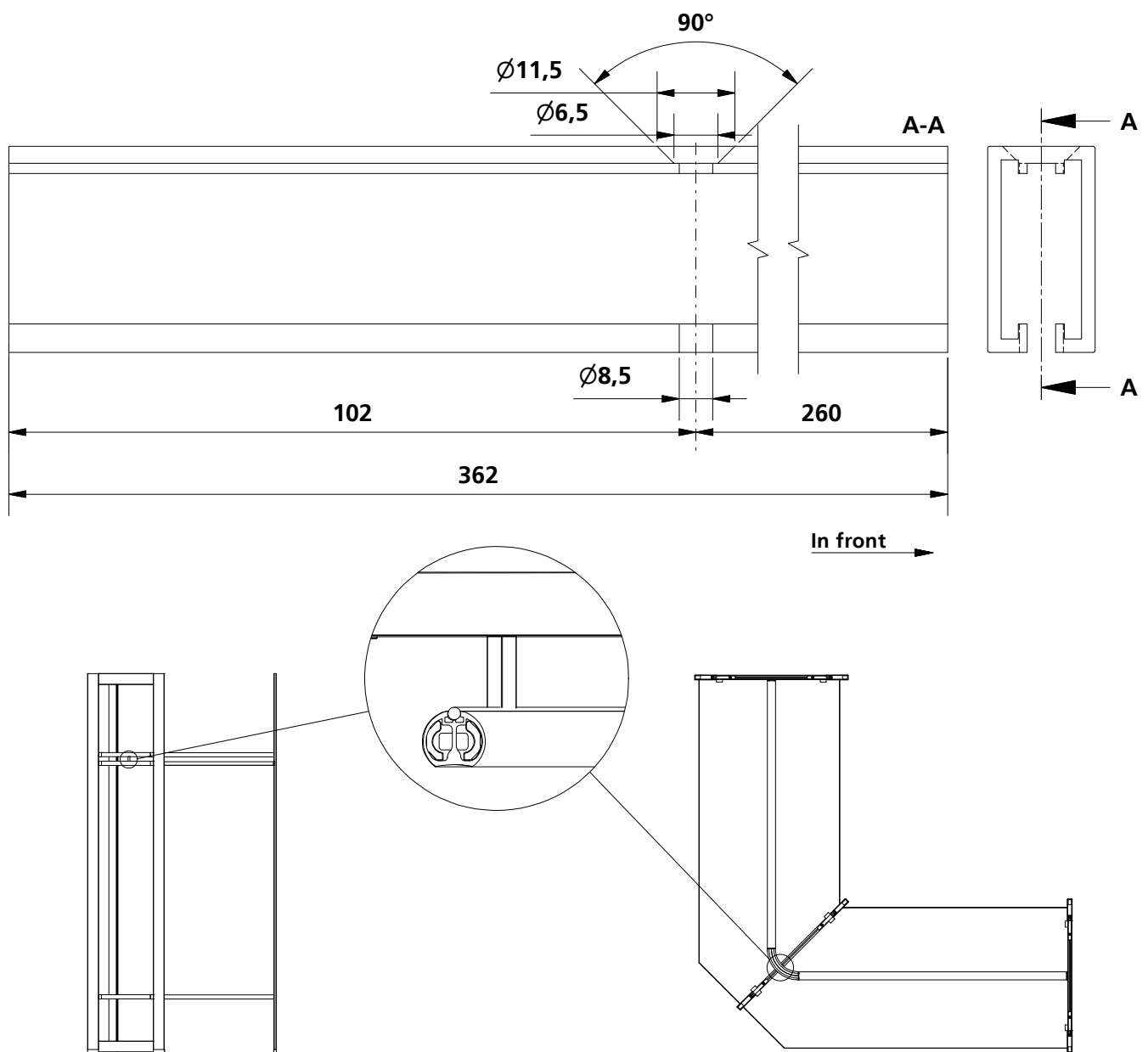


The ring is determined for a  
another interior systems.

Item list			
Object	Quantity	Decription	Item number
1	2	Hanging rod	82.23.020
2	1	Hanging rod corner connector	80.22.056
3	1	Rod (PVC)	80.23.025

# DETAIL DRAWING

## CORNICE ROD CARRIER 566 DRILL PICTURE



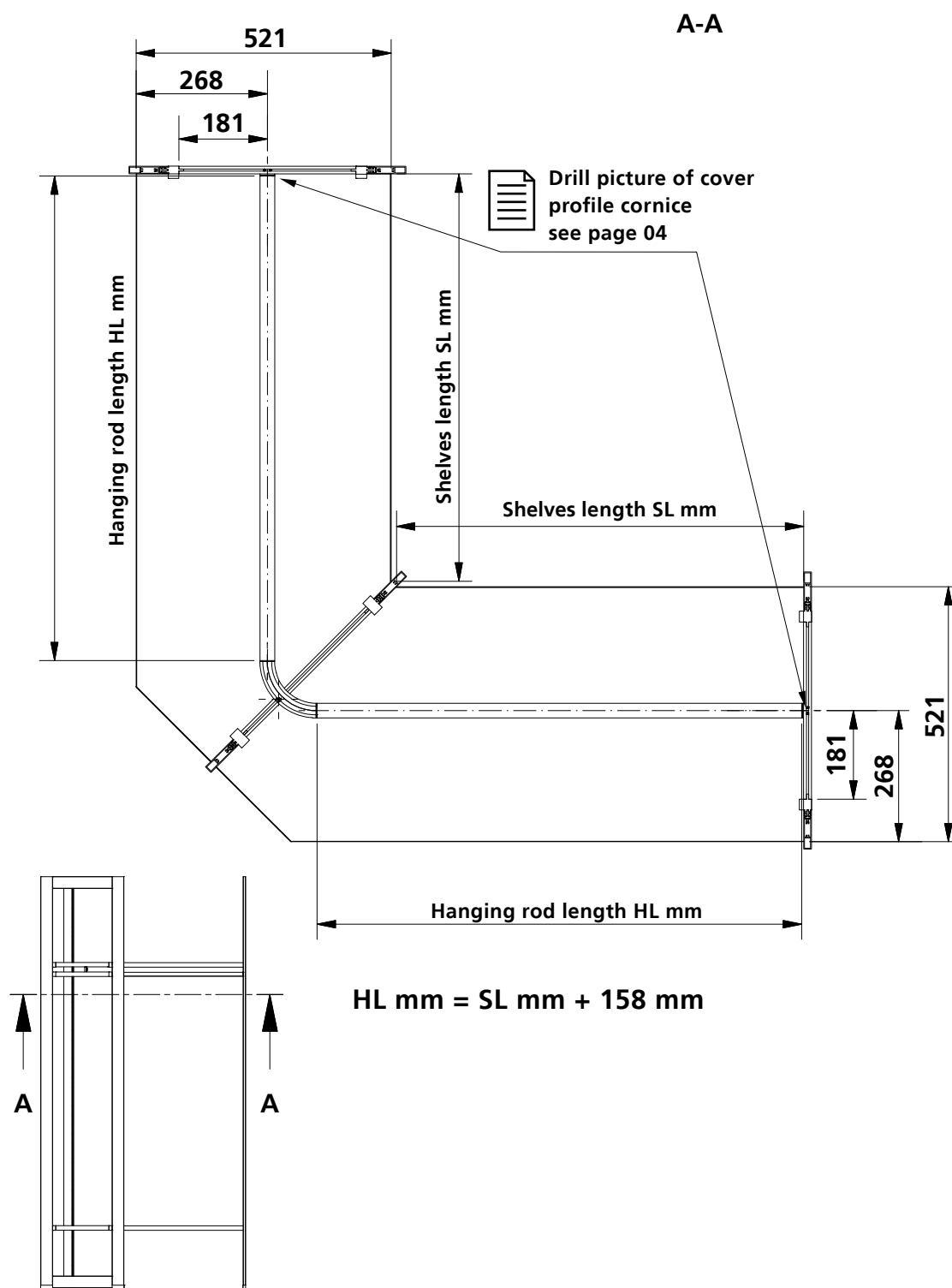
08\_09

1\_ Depth of shelf 521 mm = depth of corner frames 566 mm



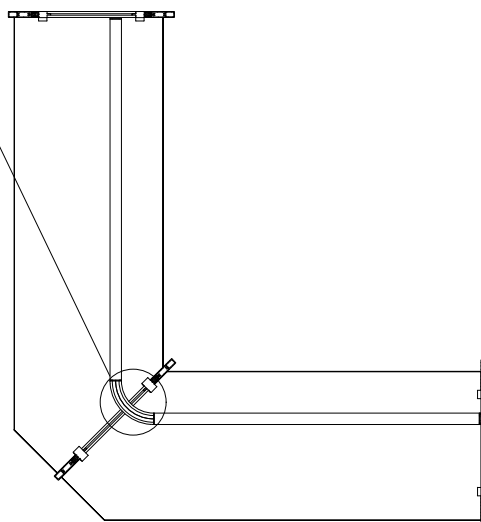
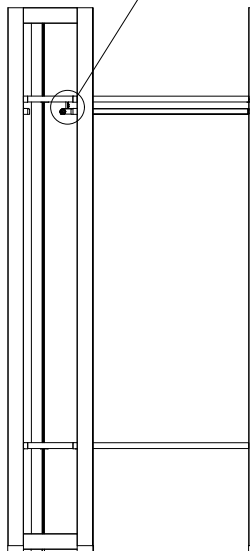
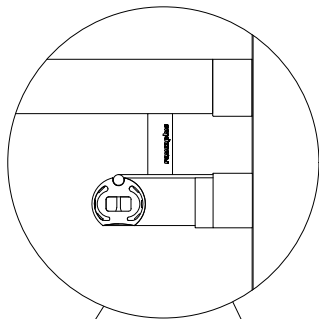
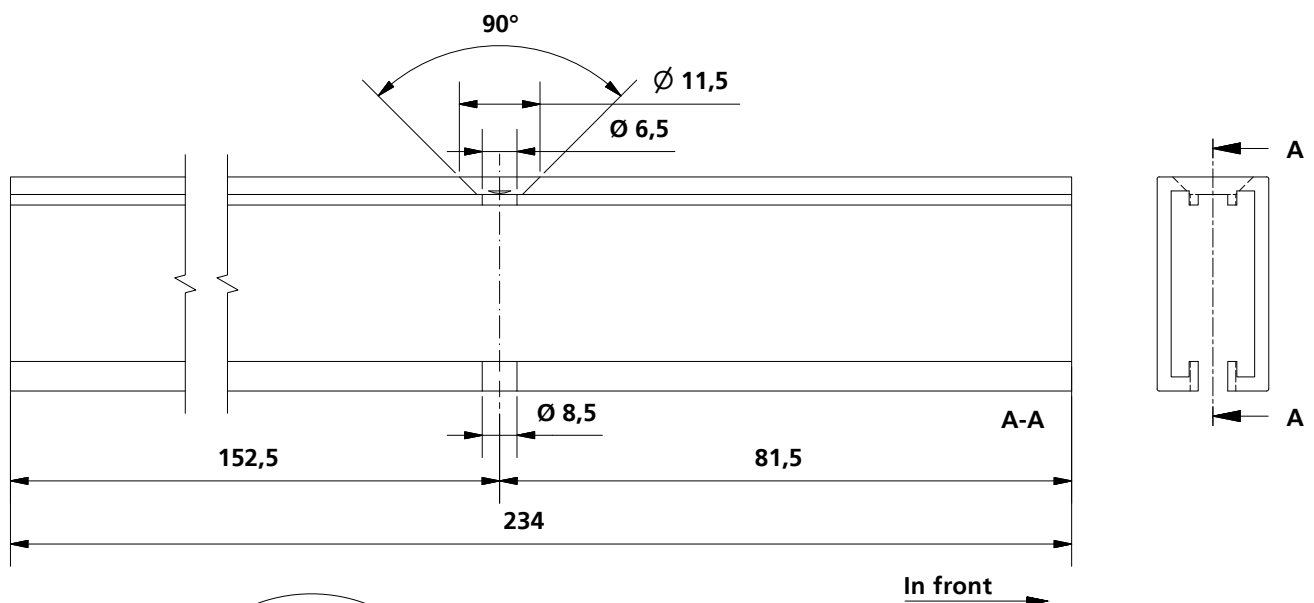
# DETAIL DRAWING

## CORNICE 566 HANGING ROD CORNER CONNECTOR



# DETAIL DRAWING

## CORNICE ROD CARRIER 438 DRILL PICTURE

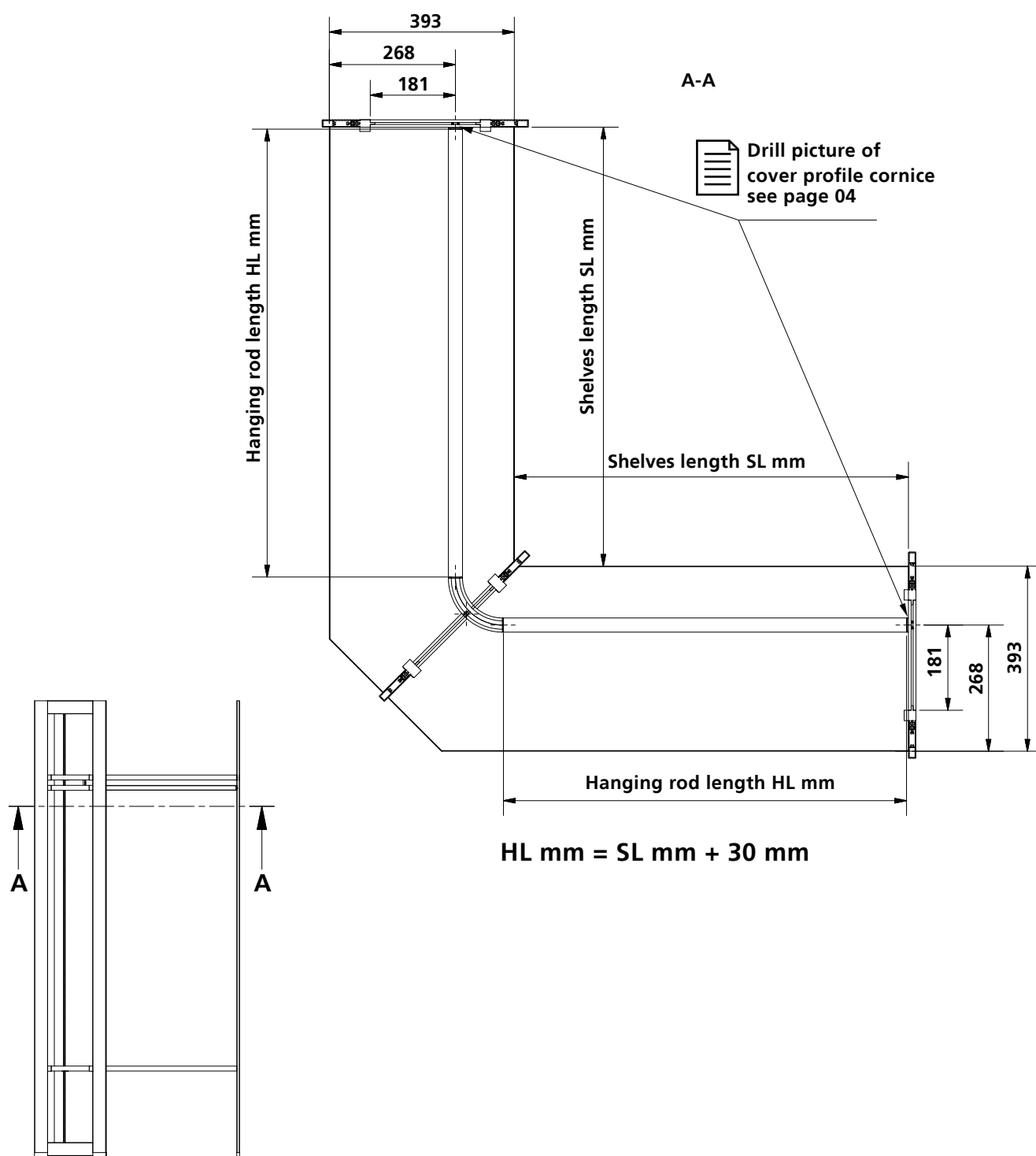


10\_11

1\_ Depth of shelf 393 mm = depth of corner frames 438 mm

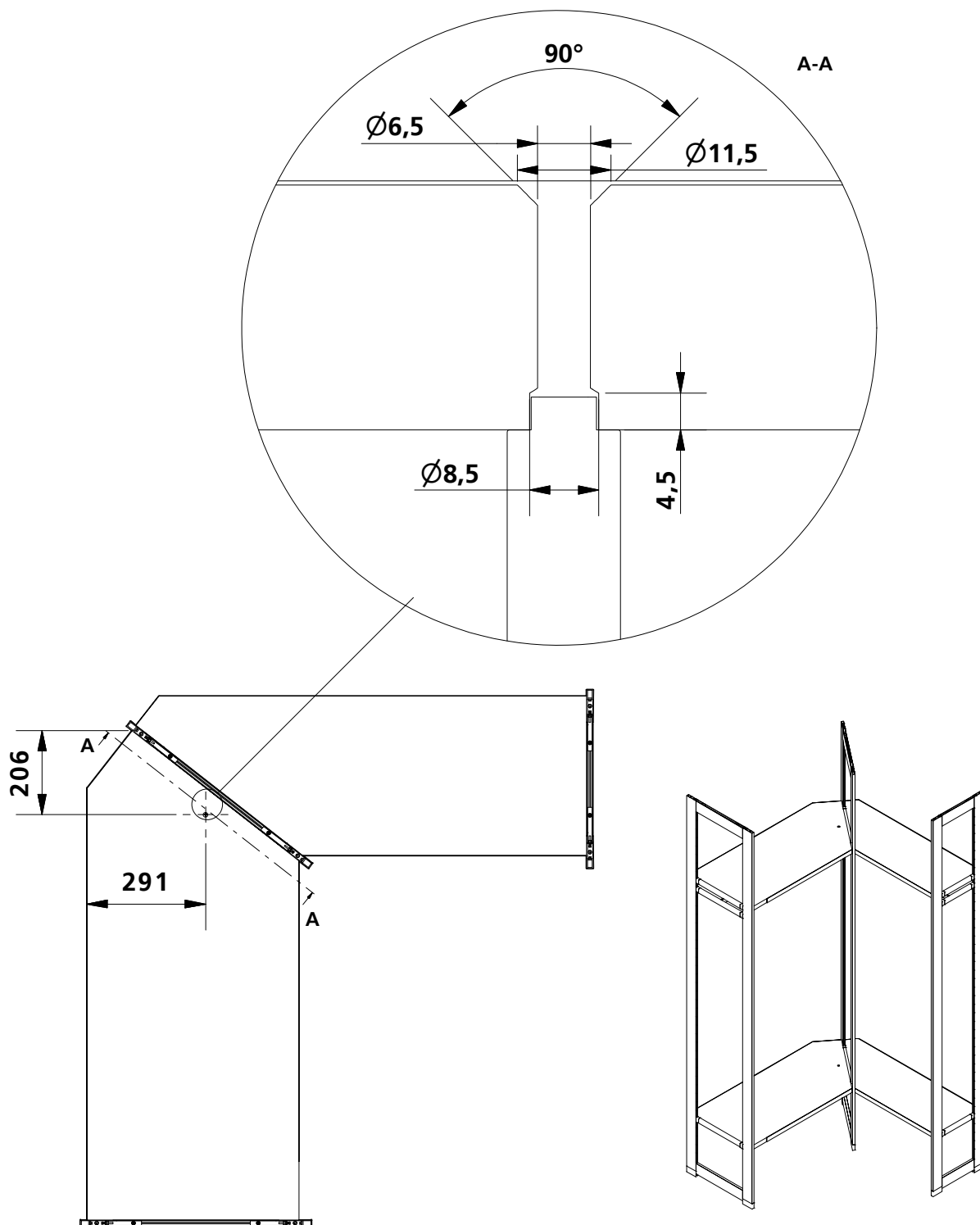
# DETAIL DRAWING

## CORNICE 438 HANGING ROD CORNER CONNECTOR



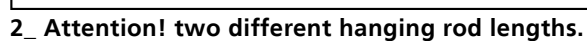
# DETAIL DRAWING

## CORNICE 438/566 ADJUSTABLE DEPTH DRILL PICTURE



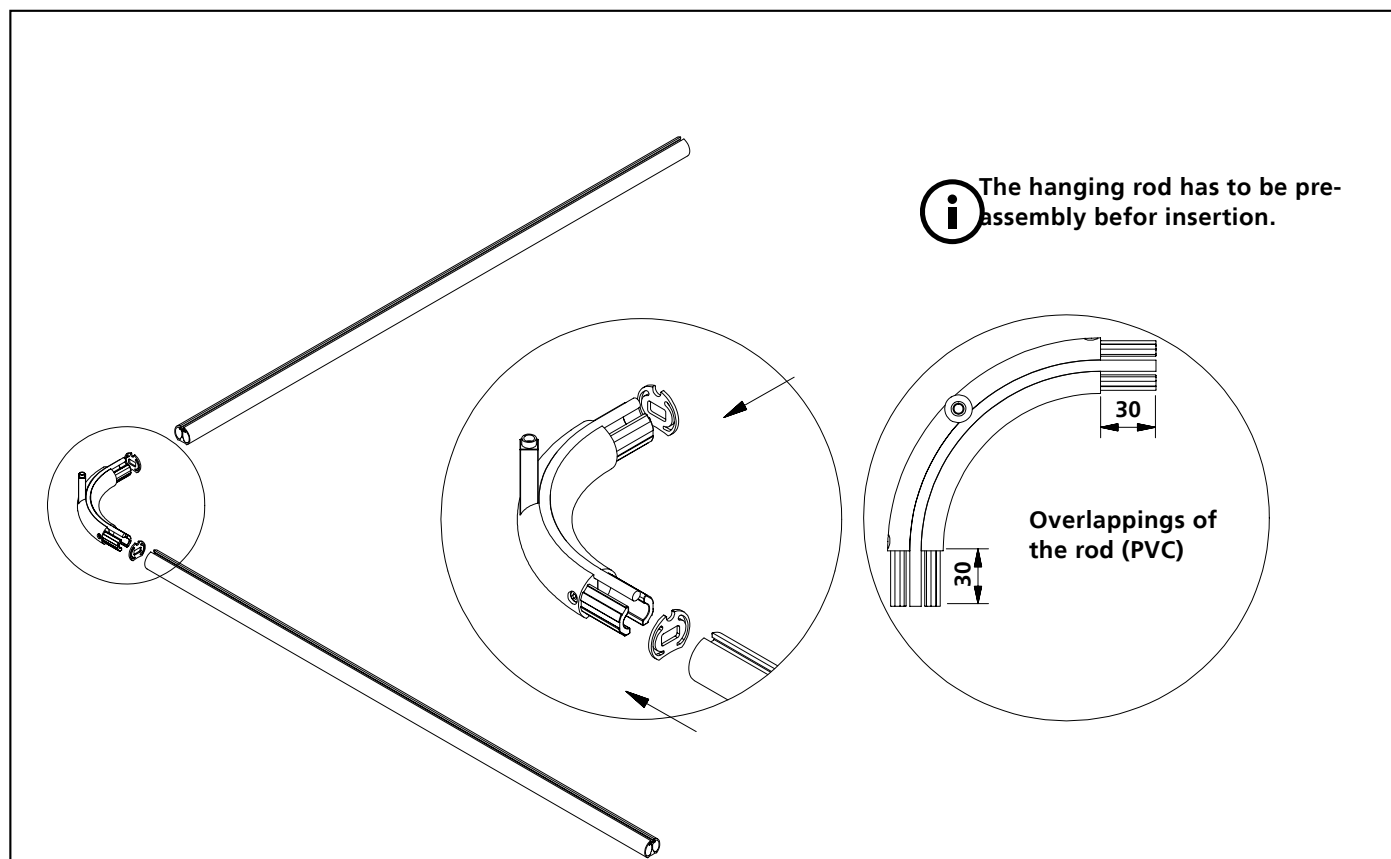
1\_ corner solution with adjustable depth, depth of shelf 393 mm with 521 mm = depth of corner frames 566 mm.

## CORNICE 438/566 HANGING ROD CORNER CONNECTOR

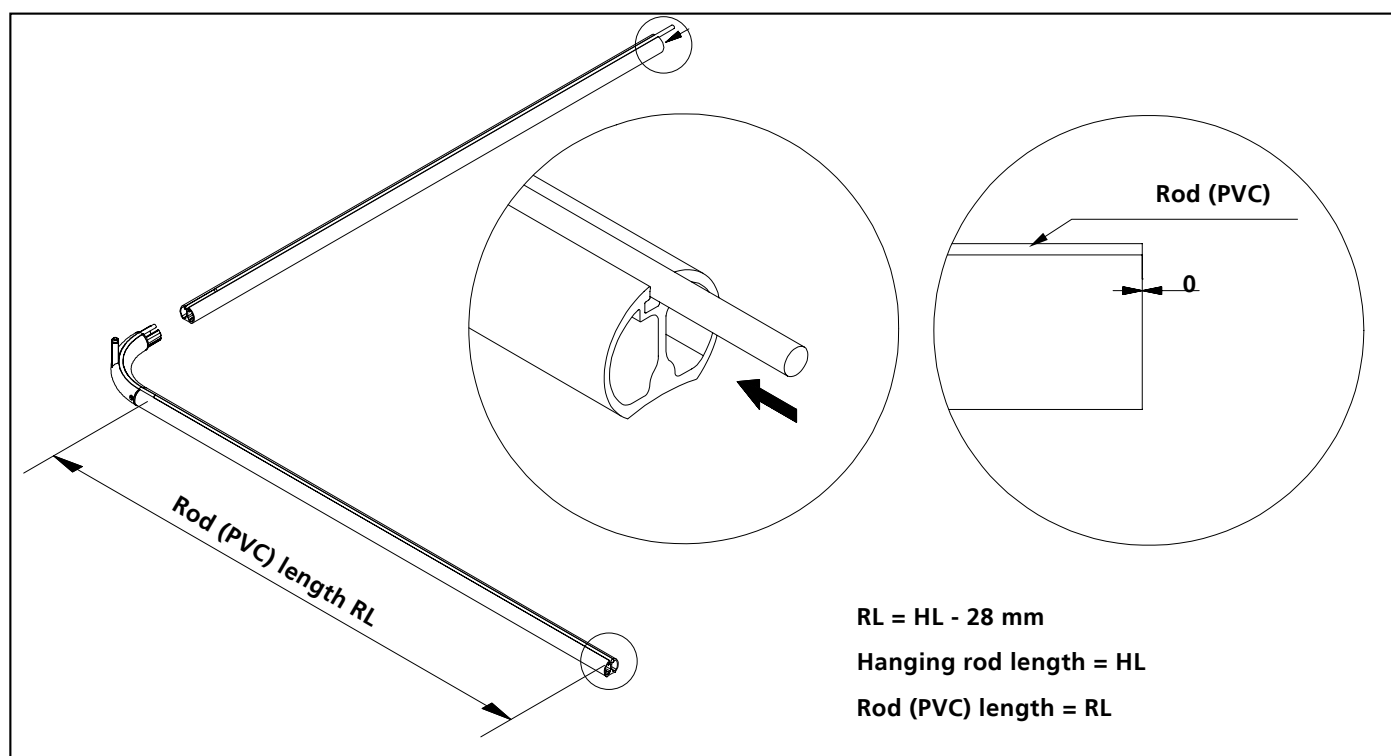


# DETAIL DRAWING

## PRE-ASSEMBLY THE HANGING ROD



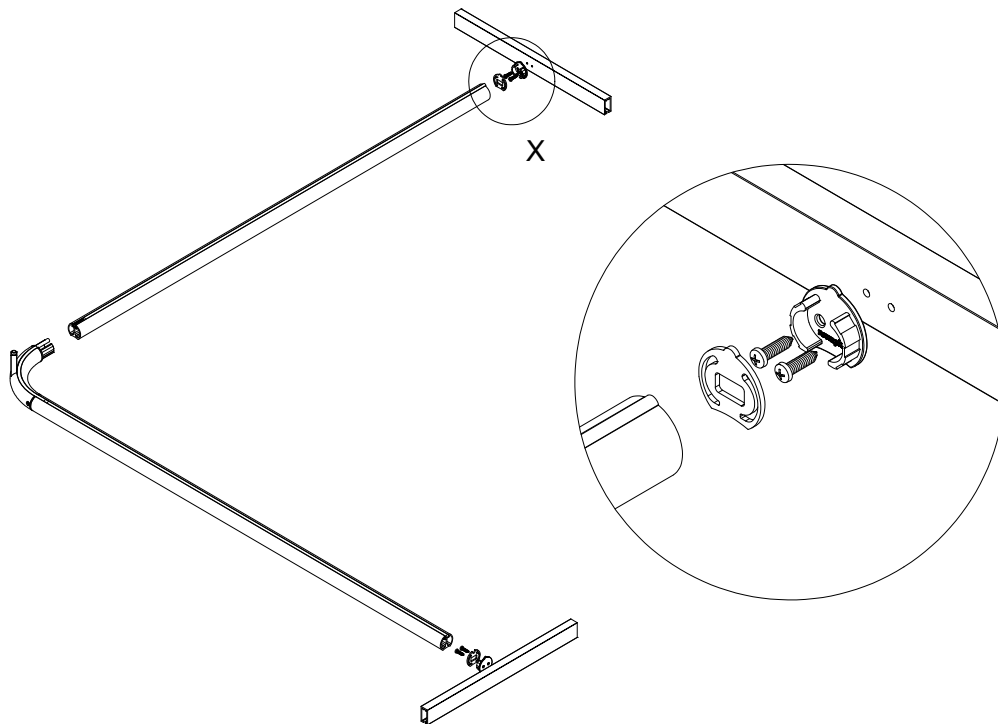
1\_ Assembly of the hanging rod / insert the rod (PVC) in the hanging rod corner connector



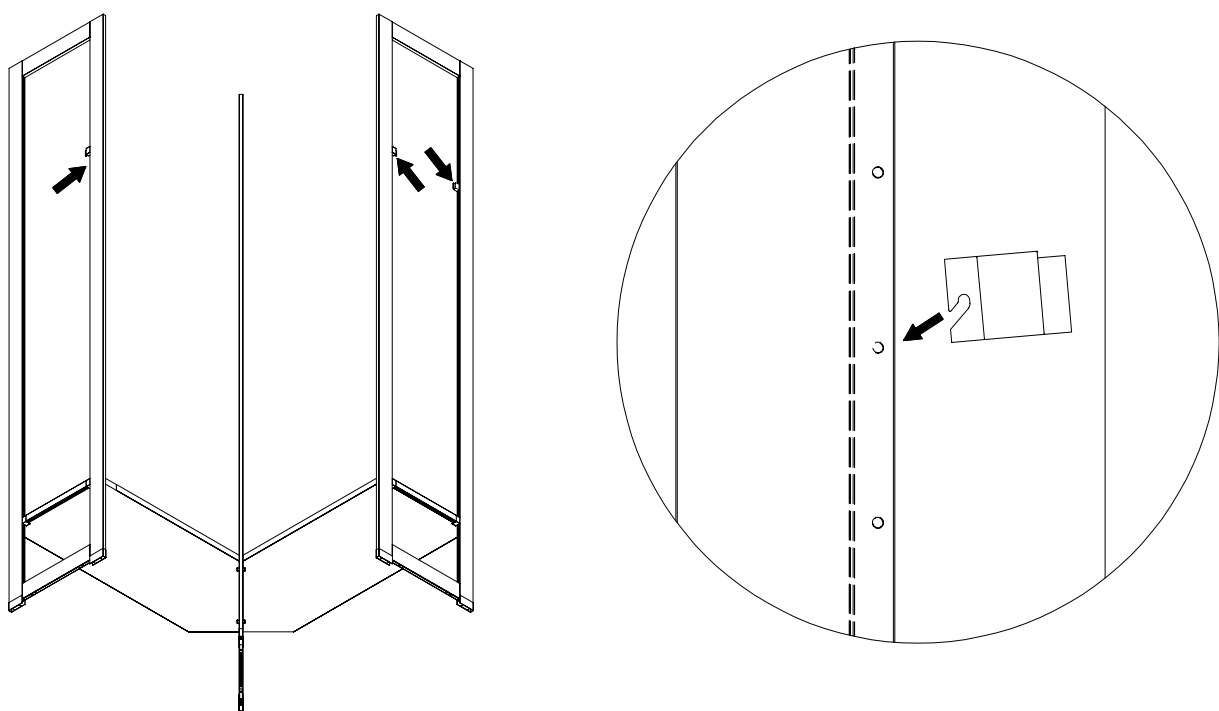
2\_ Insertion of the rod (PVC)

# DETAIL DRAWING

## PRE-ASSEMBLY THE HANGING ROD



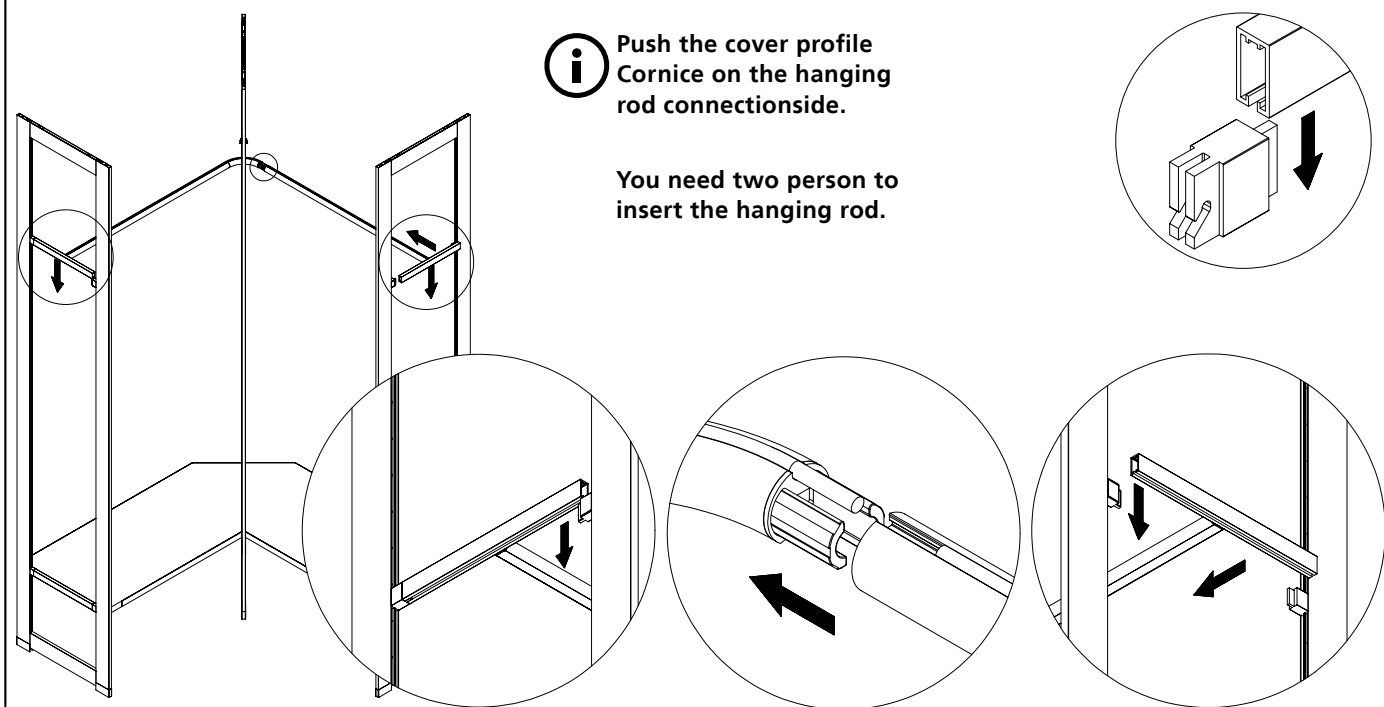
3\_ Assembly of the cover profile Cornice



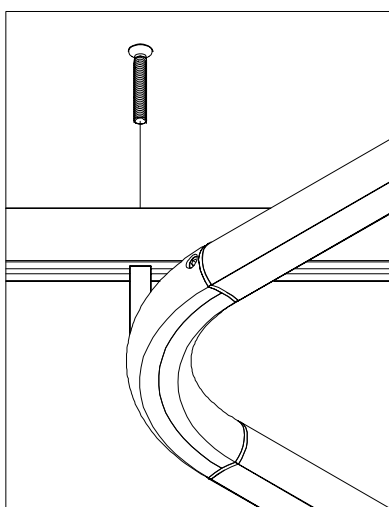
4\_ Always start with the front hanging rod connection to be placed in the desired position.

# EINBAUANLEITUNG

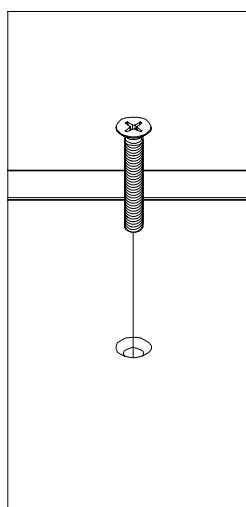
## HANGING ROD CORNER CONNECTOR



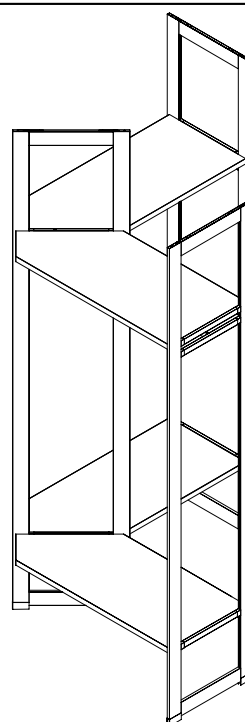
### 5\_ Insert the pre-assembled hanging rod



Cornice 566 and Cornice 438  
screw connection in Cover pro-  
file Cornice



Cornice 566/438 screw  
connection on the shelf.  
(adjustable depth)



### 6\_ Screwing the hanging rod corner connector / Insert the shelf.